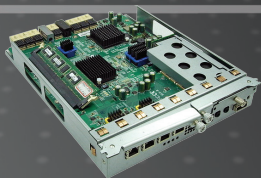


ISCSI IP SAN STORAGE



DSN-610/640 Series

- Quick Installation Guide+
- Installations-Anleitung+
- Guide d'installation+
- Guía de instalación+
- Guida di Installazione+

Quick Installation Guide

DSN-610/640

iSCSI IP SAN storage

Package Contents

If any of the items are missing, please contact your reseller.



RAID controller, DSN-610
or DSN-640 (x1)



GBIC transceiver (x1) and
cable (x1) for DSN-640
only

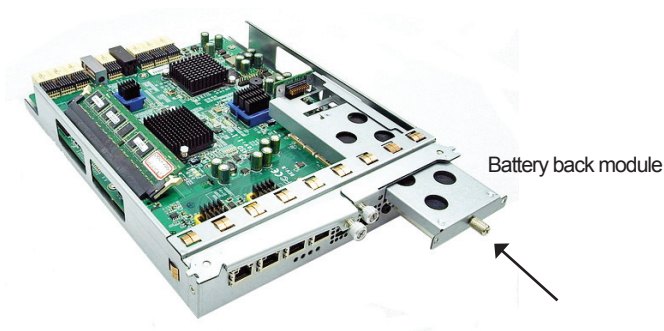
Install battery backup module

Please follow procedure below to install battery backup module.

1. Make sure DSN-6000 series is power off.
2. Remove the cover of battery backup module.



3. Insert the battery backup module.



4. Tighten the screws up.
5. Power on DSN-6000 series

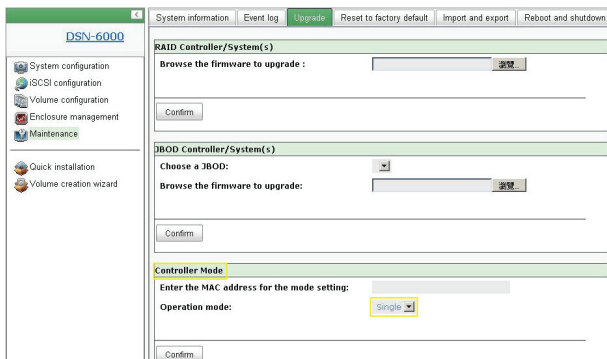
Install DSN-610/DSN-640 in DSN-6x10 subsystem

This following procedure applies to upgrading from DSN-6110 to DSN6120 as well as from DSN-6410 to DSN-6420. Before you do this, please make sure that either DSN-6110 or DSN-6410 is properly installed according to the manuals.

Before you can insert the second controller to the IP SAN storage, the IP SAN storage system should be up and running and the maintenance/system page of the GUI should look like the following screenshot.. Note that the status is single as you have one controller only.

System information			
Item	Information		
CPU type	XSC3-IOP8134x Family rev 9 (v5l)		
System memory	ECC Unbuffered DDR-II 2048MB		
Firmware version	DSN-6000 2.0.1 (build 201102111500)		
Serial number	14D64D868E40 (Controller 1 : 500137800390AD98)		
Backplane ID	DSN6000		
JBOD serial no.	No JBOD connected		
JBOD status	No JBOD connected		
Status	Single		
Replication	Not activated.		

You can also verify controller mode in “Maintenance\Upgrade”. Check out the “Controller Mode” section.



Please follow the steps below to upgrade to dual controller mode.

Step 1

Go to “Maintenance\System”. Copy the IP SAN storage serial number.

DSN-6000		System information	Event log	Upgrade	Reset to factory default
Item	Information				
CPU type	XSC3-IOP8134x Family rev 9 (v5I)				
System memory	ECC Unbuffered DDR-II 2048MB				
Firmware version	DSN-6000 2.0.1 (build 201102111500)				
Serial number	14D64D868E40 Controller 1 : 500137800390AD98)				
Backplane ID	DSN6000				
JBOD serial no.	No JBOD connected				
JBOD status	No JBOD connected				
Status	Single				
Replication	Not activated.				

Step2

Go to “Maintenance\Upgrade” and paste the serial number into “Controller Mode” section. Select “Dual” as operation mode.

System information	Event log	Upgrade	Reset to factory default	Import and export	Reboot and shutdown
RAID Controller/System(s)					
Browse the firmware to upgrade :					
<input type="text"/>					
<input type="button" value="瀏覽"/>					
<input type="button" value="Confirm"/>					
JBOD Controller/System(s)					
Choose a JBOD:					
<input type="text"/>					
Browse the firmware to upgrade:					
<input type="text"/>					
<input type="button" value="瀏覽"/>					
<input type="button" value="Confirm"/>					
Controller Mode					
Enter the MAC address for the mode setting:					
<input type="text" value="14D64D868E40"/>					
Operation mode:					
<input type="button" value="Single"/>					
<input checked="" type="button" value="Dual"/>					
<input type="button" value="Single"/>					
<input type="button" value="Confirm"/>					

Step3

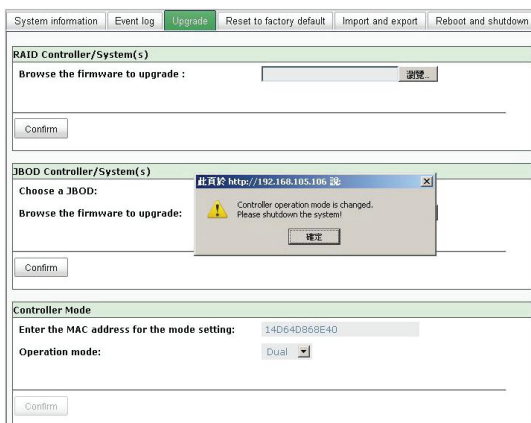
Click “confirm”. The system will ask you to shutdown. Please shutdown IP SAN storage.

System information	Event log	Upgrade	Reset to factory default	Import and export	Reboot and shutdown
RAID Controller/System(s)					
Browse the firmware to upgrade :					
<input type="text"/>					
<input type="button" value="瀏覽"/>					
<input type="button" value="Confirm"/>					
JBOD Controller/System(s)					
Choose a JBOD:					
<input type="text"/>					
Browse the firmware to upgrade:					
<input type="text"/>					
<input type="button" value="瀏覽"/>					
<input type="button" value="Confirm"/>					
Controller Mode					
Enter the MAC address for the mode setting:					
<input type="text" value="14D64D868E40"/>					
Operation mode:					
<input type="button" value="Dual"/>					
<input type="button" value="Confirm"/>					

此頁於 <http://192.168.105.106> 處

? Controller operation mode will be changed. Sure?

Click Ok.



Go to “Maintenance\Reboot and shutdown”. Click “Shutdown” to shutdown the system.

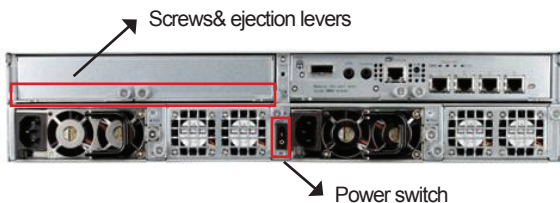


Click Ok.



Step4

Power off DSN-6110 or DSN-6410 by switching power button. Remove the empty cage by loosen the screws and ejection levers.

**Step5**

Insert the second controller to the IP SAN storage and secure in place, then power on the system.



The IP SAN storage should now appear in dual controller mode as either DSN-6120 or DSN-6420.

Go to "Maintenance\System information" to check that the IP SAN storage is running in dual controller mode now.

System information		Event log	Upgrade	Firmware synchronization	Reset to factory default	Import
DSN-6000						
<ul style="list-style-type: none"> System configuration iSCSI configuration Volume configuration Enclosure management Maintenance Quick installation Volume creation wizard 						
Item	Information					
CPU type	X5C3-IOPB134x Family rev 9 (v6)					
System memory	ECC Unbuffered DDR-8 2048MB					
Firmware version	DSN-6000 2.0.1 (build 201102111500)					
Serial number	14D64D68BE40 (Controller 1 : 500137800390AD98 , Controller 2 : 500137800390A608)					
Backplane ID	DSN6000					
JBOD serial no.	No JBOD connected					
JBOD status	No JBOD connected					
Status	Normal					
Replication	Not activated					

Technical Support**United Kingdom (Mon-Fri)**

Home Wireless/Broadband 0871 873 3000 (9.00am–06.00pm, Sat 10.00am-02.00pm)
 Managed, Smart, & Wireless Switches, or Firewalls 0871 873 0909 (09.00am – 05.30pm)
 (BT 10ppm, other carriers may vary.)

Ireland (Mon-Fri)

All Products 1890 886 899 (09.00am-06.00pm, Sat 10.00am-02.00pm)
 €0.05ppm peak, €0.045ppm off peak Times

Internet

<http://www.dlink.co.uk>
<ftp://ftp.dlink.co.uk>

Installationsanleitung DSN-610/640

iSCSI IP SAN (Speichersystem)

Packungsinhalt

Wenn eines dieser Elemente fehlt, wenden Sie sich bitte an Ihren Vertriebspartner oder Fachhändler.



RAID Controller, DSN-610 oder DSN-640 (x1)



GBIC-Transceiver (x1) und Kabel (x1) nur für DSN-640

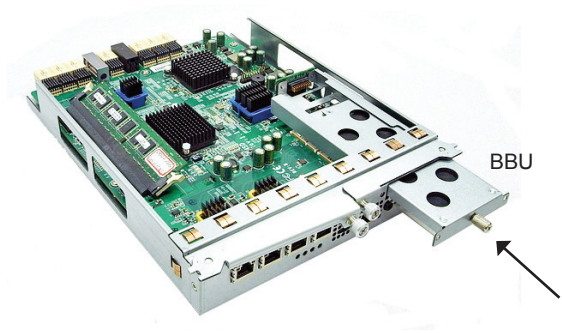
BBU (Battery Backup Unit) installieren

Gehen Sie bitte wie im Folgenden beschrieben vor, um das BBU (auch Battery Backup Module oder Notstromversorgungsmodul genannt) zu installieren.

1. Stellen Sie zunächst sicher, dass das Produkt der DSN-6000 Produktreihe ausgeschaltet ist.
2. Nehmen Sie die Abdeckung des BBU ab.



3. Setzen Sie das BBU (Battery Backup Unit) ein.



4. Ziehen Sie die Schrauben fest.

5. Schalten Sie das Gerät der DSN-6000 Produktreihe ein

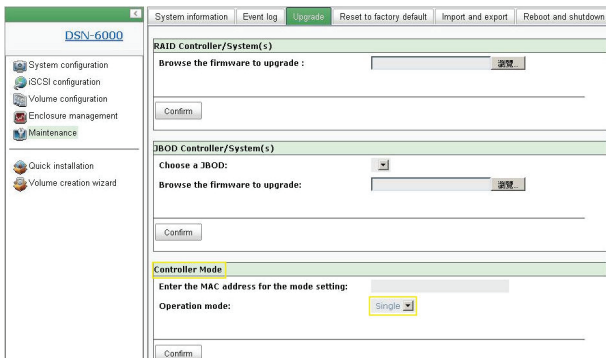
Installation des DSN-610/DSN-640 in das DSN-6x10 Subsystem

Das folgende Verfahren gilt für ein Upgrade von DSN-6110 auf DSN-6120 sowie von DSN-6410 auf DSN-6420. Bevor Sie damit beginnen, sollten Sie zuerst sicherstellen, dass entweder DSN-6110 oder DSN-6410 entsprechend den Anleitungen der Handbücher ordnungsgemäß installiert ist.

Bevor Sie den zweiten Controller in das IP SAN (Speichersystem) einsetzen, sollte das IP SAN-Speichersystem den Betrieb aufgenommen haben und die Seite 'Maintenance\ System' der grafischen Benutzeroberfläche sollte wie die folgende Bildschirmabbildung aussehen. Beachten Sie, dass der Status als 'Single' (Einzel) angegeben ist, da Sie nur über einen Controller verfügen.

DSN-6000		System information	Event log	Upgrade	Reset to factory default																				
<ul style="list-style-type: none"> System configuration iSCSI configuration Volume configuration Enclosure management Maintenance Quick installation Volume creation wizard 	<table border="1"> <thead> <tr> <th>Item</th> <th>Information</th> </tr> </thead> <tbody> <tr> <td>CPU type</td> <td>XSC3-IO P8134x Family rev 9 (v5l)</td> </tr> <tr> <td>System memory</td> <td>ECC Unbuffered DDR-II 2048MB</td> </tr> <tr> <td>Firmware version</td> <td>DSN-6000 2.0.1 (build 201102111500)</td> </tr> <tr> <td>Serial number</td> <td>14D64D868E40 (Controller 1 : 500137800390AD98)</td> </tr> <tr> <td>Backplane ID</td> <td>DSN6000</td> </tr> <tr> <td>JBOD serial no.</td> <td>No JBOD connected</td> </tr> <tr> <td>JBOD status</td> <td>No JBOD connected</td> </tr> <tr> <td>Status</td> <td>Single</td> </tr> <tr> <td>Replication</td> <td>Not activated.</td> </tr> </tbody> </table>	Item	Information	CPU type	XSC3-IO P8134x Family rev 9 (v5l)	System memory	ECC Unbuffered DDR-II 2048MB	Firmware version	DSN-6000 2.0.1 (build 201102111500)	Serial number	14D64D868E40 (Controller 1 : 500137800390AD98)	Backplane ID	DSN6000	JBOD serial no.	No JBOD connected	JBOD status	No JBOD connected	Status	Single	Replication	Not activated.				
Item	Information																								
CPU type	XSC3-IO P8134x Family rev 9 (v5l)																								
System memory	ECC Unbuffered DDR-II 2048MB																								
Firmware version	DSN-6000 2.0.1 (build 201102111500)																								
Serial number	14D64D868E40 (Controller 1 : 500137800390AD98)																								
Backplane ID	DSN6000																								
JBOD serial no.	No JBOD connected																								
JBOD status	No JBOD connected																								
Status	Single																								
Replication	Not activated.																								

Der Controller-Modus kann auch unter "Maintenance\Upgrade" (Wartung und Verwaltung\Upgrade) verifiziert werden. Die entsprechenden Informationen finden Sie im Abschnitt "Controller Mode" (Controller-Modus).



Gehen Sie wie folgt vor, um ein Upgrade in den dualen Controller-Modus vorzunehmen.

Schritt 1

Rufen Sie "Maintenance\System" (Wartung und Verwaltung\System) auf. Kopieren Sie die IP SAN-Seriennummer.

DSN-6000		System information	Event log	Upgrade	Reset to factory default
Item	Information				
CPU type	XSC3-IOP8134x Family rev 9 (v5I)				
System memory	ECC Unbuffered DDR-II 2048MB				
Firmware version	DSN-6000 2.0.1 (build 201102111500)				
Serial number	14D64D868E40 Controller 1 : 500137800390AD98)				
Backplane ID	DSN6000				
JBOD serial no.	No JBOD connected				
JBOD status	No JBOD connected				
Status	Single				
Replication	Not activated.				

Schritt 2

Rufen Sie "Maintenance\Upgrade" auf und fügen Sie die Seriennummer in den Abschnitt "Controller Mode" (Controller-Modus) ein. Wählen Sie "Dual" als Betriebsmodus.

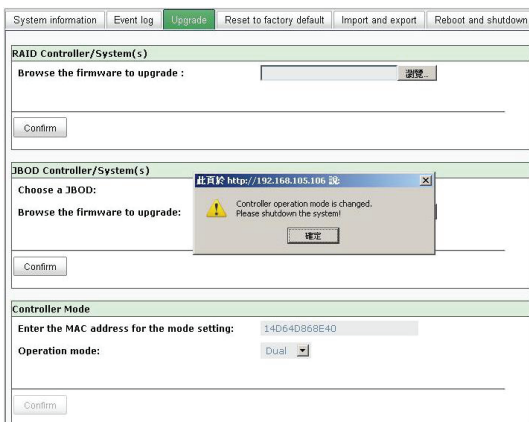
System information	Event log	Upgrade	Reset to factory default	Import and export	Reboot and shutdown
RAID Controller/System(s)					
Browse the firmware to upgrade :		<input type="text"/> <input type="button" value="瀏覽"/>			
<input type="button" value="Confirm"/>					
JBOD Controller/System(s)					
Choose a JBOD:		<input type="text"/>			
Browse the firmware to upgrade:		<input type="text"/> <input type="button" value="瀏覽"/>			
<input type="button" value="Confirm"/>					
Controller Mode					
Enter the MAC address for the mode setting:		<input type="text" value="14D640868E40"/>			
Operation mode:		<input type="button" value="Single"/> <input checked="" type="button" value="Dual"/> <input type="button" value="Single"/>			
<input type="button" value="Confirm"/>					

Schritt 3

Klicken Sie auf "Confirm" (Bestätigen). Sie werden aufgefordert, das System herunterzufahren. Fahren Sie bitte das IP SAN (Speichergerät) herunter.

System information	Event log	Upgrade	Reset to factory default	Import and export	Reboot and shutdown
RAID Controller/System(s)					
Browse the firmware to upgrade :		<input type="text"/> <input type="button" value="瀏覽"/>			
<input type="button" value="Confirm"/>					
JBOD Controller/System(s)					
Choose a JBOD:		<input type="text"/>			
Browse the firmware to upgrade:		<input type="text"/>			
<div style="border: 1px solid gray; padding: 5px; width: fit-content;"> <p>此頁於 https://192.168.105.106 說</p> <p>Controller operation mode will be changed. Sure?</p> <p><input type="button" value="確定"/> <input type="button" value="取消"/></p> </div>					
<input type="button" value="Confirm"/>					
Controller Mode					
Enter the MAC address for the mode setting:		<input type="text" value="14D640868E40"/>			
Operation mode:		<input checked="" type="button" value="Dual"/>			
<input type="button" value="Confirm"/>					

Klicken Sie auf OK.



Rufen Sie "Maintenance\System and shutdown" (Wartung und Verwaltung\System und Herunterfahren) auf. Klicken Sie auf "Shutdown", um das System herunterzufahren.

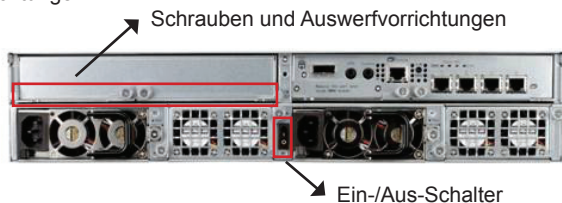


Klicken Sie auf OK.



Schritt 4

Schalten Sie das DSN-6110 oder DSN-6410 durch Betätigung des Ein/Aus-Schalters aus. Entfernen Sie das leere Gehäuse durch Lösen der Schrauben und Auswerfvorrichtungen.



Schritt 5

Setzen Sie den zweiten Controller in das IP SAN (Speichersystem) ein und sichern Sie ihn. Schalten Sie dann das System ein.



Das IP SAN Speichersystem sollte nun im dualen Controller-Modus entweder als DSN-6120 oder DSN-6420 erscheinen.

Zeigen Sie "Maintenance\System information" (Wartung und Verwaltung\Systeminfo) an, um zu prüfen, dass das System nun tatsächlich im dualen Controller-Modus läuft.

Item	Information
CPU type	X5C3-IOPB134x Family rev 9 (v6)
System memory	ECC Unbuffered DDR-II 2048MB
Firmware version	DSN-6000 2.0.1 (build 201102111500)
Serial number	14D64D668E40 (Controller 1 : 500137800390A508 ,Controller 2 : 500137800390A508)
Backplane ID	DSN6000
JBOD serial no.	No JBOD connected
JBOD status	No JBOD connected
Status	Normal
Replication	Not activated

Technische Unterstützung

Deutschland:

Web: <http://www.dlink.de>
Telefon: +49(0)1805 2787 0,14 € pro Minute
Zeiten: Mo. –Fr. 09:00 – 17:30 Uhr

Österreich: Web:

<http://www.dlink.at>
Telefon: +43(0)820 480084 0,116 € pro Minute
Zeiten: Mo. –Fr. 09:00 – 17:30 Uhr

Schweiz:

Web: <http://www.dlink.ch>
Telefon: +41(0)848 331100 0,08 CHF pro Minute
Zeiten: Mo. –Fr. 09:00 – 17:30 Uhr

* Gebühren aus Mobilnetzen und von anderen Providern können abweichen.

Guide d'installation rapide DSN-610/640

Stockage IP SAN iSCSI

Contenu de la boîte

Contactez immédiatement votre revendeur s'il manque l'un des éléments.

FRANÇAIS



Contrôleur RAID, DSN-610 ou DSN-640 (x1)



1 transceiver GBIC et
1 câble pour DSN-640
uniquement

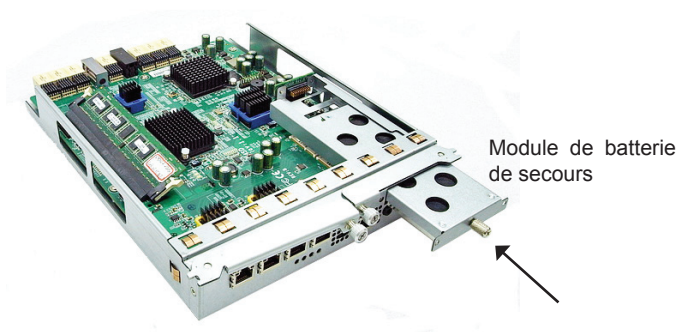
Installation du module de batterie de secours

Veuillez suivre la procédure ci-dessous pour installer le module de batterie de secours.

1. Vérifiez que le DSN-6000 series est hors tension.
2. Retirez le couvercle du module de batterie de secours.



3. Insérez le module de batterie de secours.



4. Serrez les vis.

5. Mettez le DSN-6000 series sous tension.

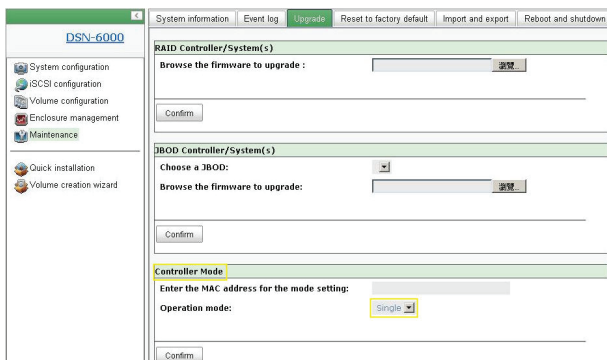
Installation du DSN-610/DSN-640 dans le sous-système DSN-6x10

La procédure suivante permet de passer du DSN-6110 au DSN-6120, mais aussi du DSN-6410 au DSN-6420. Avant de poursuivre, veuillez vous assurer que le DSN-6110 ou le DSN-6410 est correctement installé, conformément aux manuels.

Avant de pouvoir introduire le second contrôleur sur le périphérique de stockage SAN sur IP, celui-ci doit être mis sous tension et fonctionner ; la page maintenance\system (Maintenance\Systeme) de l'interface utilisateur doit être identique à la capture d'écran ci-dessous. Notez que le statut est Single (Unique) car vous ne possédez qu'un seul contrôleur.

Item	Information
CPU type	XSC3-10P8134x Family rev 9 (v5l)
System memory	ECC Unbuffered DDR-II 2048MB
Firmware version	DSN-6000 2.0.1 (build 201102111500)
Serial number	14D64D868E40 (Controller 1 : 500137800390AD98)
Backplane ID	DSN6000
JBOD serial no.	No JBOD connected
JBOD status	No JBOD connected
Status	Single
Replication	Not activated.

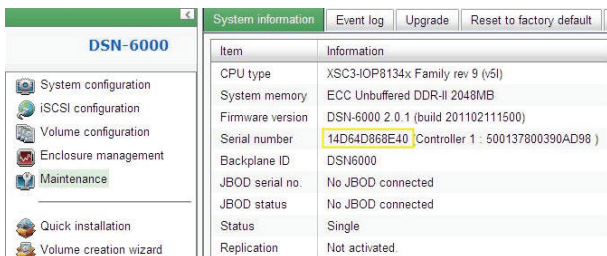
Vous pouvez également vérifier que le contrôleur est en mode « Maintenance\Upgrade » (Maintenance\Mise à jour). Pour ce faire, consultez la section « Controller Mode » (Mode du contrôleur).



Veillez suivre les étapes ci-dessous pour passer au mode double contrôleur.

Étape 1

Accédez à « Maintenance\System » (Maintenance\Système). Copiez le numéro de série du périphérique de stockage SAN sur IP.



Étape 2

Accédez à « Maintenance\Upgrade » (Maintenance\Mise à jour) et collez le numéro de série dans la section « Controller Mode » (Mode du contrôleur). Sélectionnez « Dual » (Double) comme mode de fonctionnement.

System information	Event log	Upgrade	Reset to factory default	Import and export	Reboot and shutdown
RAID Controller/System(s)					
Browse the firmware to upgrade :			<input type="text"/> 瀏覽		
<input type="button" value="Confirm"/>					
JBOD Controller/System(s)					
Choose a JBOD:			<input type="button" value="v"/>		
Browse the firmware to upgrade:			<input type="text"/> 瀏覽		
<input type="button" value="Confirm"/>					
Controller Mode					
Enter the MAC address for the mode setting:			<input type="text" value="14D64D868E40"/>		
Operation mode:			<input type="button" value="Single"/> <input checked="" type="button" value="Dual"/> <input type="button" value="Single"/>		
<input type="button" value="Confirm"/>					

Étape 3

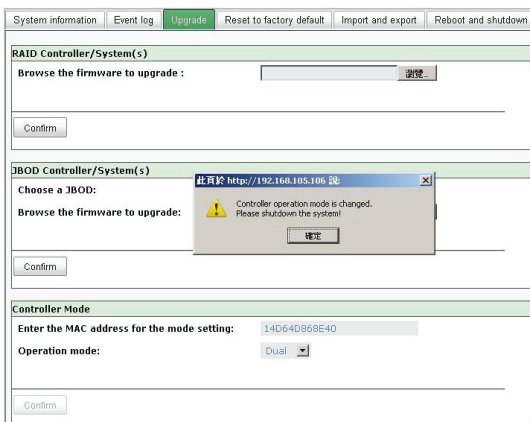
Cliquez sur « confirm » (Confirmer). Le système vous demande de l'arrêter. Veuillez arrêter le périphérique de stockage SAN sur IP.

System information	Event log	Upgrade	Reset to factory default	Import and export	Reboot and shutdown
RAID Controller/System(s)					
Browse the firmware to upgrade :			<input type="text"/> 瀏覽		
<input type="button" value="Confirm"/>					
JBOD Controller/System(s)					
Choose a JBOD:			<input type="button" value="v"/>		
Browse the firmware to upgrade:			<input type="text"/> 瀏覽		
<input type="button" value="Confirm"/>					
Controller Mode					
Enter the MAC address for the mode setting:			<input type="text" value="14D64D868E40"/>		
Operation mode:			<input type="button" value="Single"/> <input checked="" type="button" value="Dual"/> <input type="button" value="Single"/>		
<input type="button" value="Confirm"/>					

此頁於 <https://192.168.105.106> 說

Controller operation mode will be changed. Sure?

Cliquez sur Ok.



FRANÇAIS

Accédez à « Maintenance\Reboot and shutdown » (Maintenance\Réinitialisation et arrêt). Cliquez sur « Shutdown » (Arrêter) pour arrêter le système.

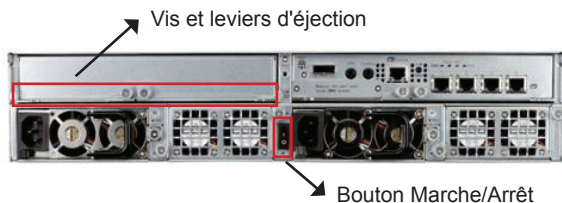


Cliquez sur Ok.



Étape 4

Éteignez le DSN-6110 ou le DSN-6410 en appuyant sur le bouton Marche/Arrêt. Retirez le compartiment vide en desserrant les vis et les leviers d'éjection.



Étape 5

Introduisez le second contrôleur dans le périphérique de stockage SAN sur IP et fixez-le en place ; ensuite, mettez le système sous tension.



Le périphérique de stockage SAN sur IP doit maintenant apparaître en mode double contrôleur, en tant que DSN-6120 ou DSN-6420.

Accédez à « Maintenance\System information » (Maintenance\Information système) pour vérifier que le périphérique de stockage SAN sur IP fonctionne maintenant en mode double contrôleur.

Item	Information
CPU type	X5C3-IOP8134x Family rev 9 (v6)
System memory	ECC Unbuffered DDR-8 2048MB
Firmware version	DSN-6000 2.0.1 (build 201102111500)
Serial number	14D64D688E40 (Controller 1 : 500137800390AD98 , Controller 2 : 500137800390A5D6)
Backplane ID	DSN6000
JBOD serial no.	No JBOD connected
JBOD status	No JBOD connected
Status	Normal
Replication	Not activated

Assistance technique

Assistance technique D-Link sur internet : <http://www.dlink.fr>

Assistance technique D-Link par téléphone : 0820 0803 03

0.12 € TTC/min depuis un poste fixe

Du lundi au vendredi de 9h à 19h (hors jours fériés)

Guía de instalación rápida DSN-610/640

iSCSI IP SAN storage

¿Qué contiene la caja?

Si falta cualquiera de los componentes, póngase en contacto con el proveedor.



Controlador RAID, DSN-610 o DSN-640 (x1)



Transceptor GBIC (x1) y cable (x1) sólo para DSN-640

ESPAÑOL

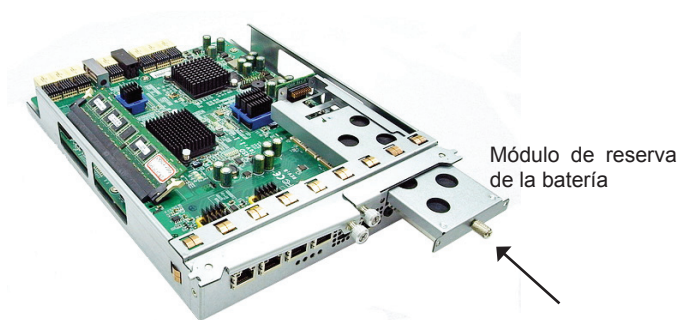
Instalar el módulo de reserva de la batería

Siga el procedimiento que aparece a continuación para instalar el módulo de reserva de la batería.

1. Asegúrese de que el módulo serie DSN-6000 está apagado.
2. Retire la cubierta del módulo de reserva de la batería.



3. Inserte el módulo de reserva de la batería.



4. Apriete los tornillos.
5. Encienda el módulo serie DSN-6000

Instalar DSN-610/DSN-640 en el subsistema DSN-6x10

Este procedimiento siguiente se aplica a la actualización del DSN-6110 al DSN6120, así como del DSN-6410 al DSN-6420. Antes de hacerlo, asegúrese de que el DSN-6110 o el DSN-6410 esté correctamente instalado de acuerdo con los manuales.

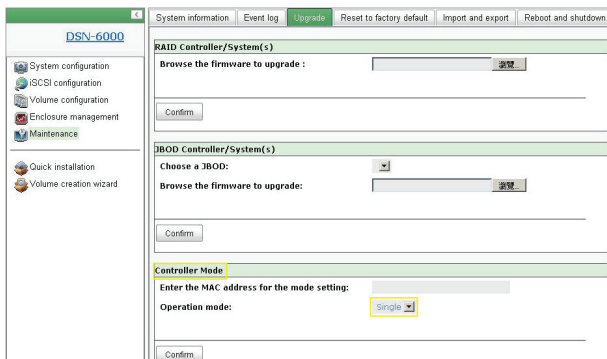
Antes de poder insertar un segundo controlador en el almacenamiento SAN IP, el sistema de almacenamiento SAN IP debe estar en funcionamiento y la página de mantenimiento\ sistema de la interfaz gráfica de usuario debe tener el aspecto de la captura de pantalla siguiente.. Tenga en cuenta que el estado es único ya que sólo tiene un controlador.

DSN-6000

- System configuration
- iSCSI configuration
- Volume configuration
- Enclosure management
- Maintenance
- Quick installation
- Volume creation wizard

Item	Information
CPU type	XSC3-10P8134x Family rev 9 (v5l)
System memory	ECC Unbuffered DDR-II 2048MB
Firmware version	DSN-6000 2.0.1 (build 201102111500)
Serial number	14D64D868E40 (Controller 1 : 500137800390AD98)
Backplane ID	DSN6000
JBOD serial no.	No JBOD connected
JBOD status	No JBOD connected
Status	Single
Replication	Not activated.

Puede verificar también el modo del controlador en “Mantenimiento\Actualización”. Consulte la sección “Modo del controlador”.

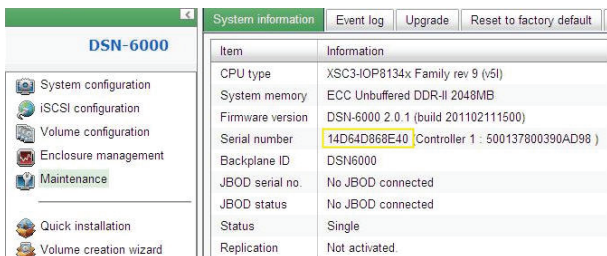


ESPAÑOL

Siga los pasos que se indican a continuación para actualizar al modo de controlador dual.

Paso 1

Vaya a “Mantenimiento\Sistema”. Copie el número de serie del almacenamiento SAN IP.



Paso 2

Vaya a “Mantenimiento\Actualización” y pegue el número de serie en la sección “Modo del controlador”. Seleccione “Doble” como modo de funcionamiento.

System information	Event log	Upgrade	Reset to factory default	Import and export	Reboot and shutdown
RAID Controller/System(s)					
Browse the firmware to upgrade :					
<input type="text"/>					
<input type="button" value="瀏覽"/>					
<input type="button" value="Confirm"/>					
JBOD Controller/System(s)					
Choose a JBOD:					
<input type="button" value="v"/>					
Browse the firmware to upgrade:					
<input type="text"/>					
<input type="button" value="瀏覽"/>					
<input type="button" value="Confirm"/>					
Controller Mode					
Enter the MAC address for the mode setting:					
<input type="text" value="14D64D868E40"/>					
Operation mode:					
<input type="button" value="Single"/> <input type="button" value="v"/>					
<input type="button" value="Dual"/> <input type="button" value="v"/>					
<input type="button" value="Single"/>					
<input type="button" value="Confirm"/>					

Paso 3

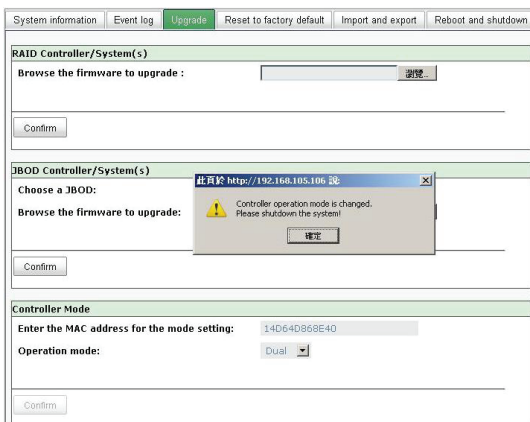
Haga clic en “Confirmar”. El sistema le pedirá que cierre. Cierre el almacenamiento SAN IP.

System information	Event log	Upgrade	Reset to factory default	Import and export	Reboot and shutdown
RAID Controller/System(s)					
Browse the firmware to upgrade :					
<input type="text"/>					
<input type="button" value="瀏覽"/>					
<input type="button" value="Confirm"/>					
JBOD Controller/System(s)					
Choose a JBOD:					
<input type="button" value="v"/>					
Browse the firmware to upgrade:					
<input type="text"/>					
<input type="button" value="瀏覽"/>					
<input type="button" value="Confirm"/>					
Controller Mode					
Enter the MAC address for the mode setting:					
<input type="text" value="14D64D868E40"/>					
Operation mode:					
<input type="button" value="Dual"/> <input type="button" value="v"/>					
<input type="button" value="Confirm"/>					

此頁於 <http://192.168.105.106> 說

Controller operation mode will be changed. Sure?

Haga clic en Aceptar.



Vaya a “Mantenimiento\Reinicio y parada”. Haga clic en “Parar” para cerrar el sistema.



Haga clic en Aceptar.



Paso 4

Apague el DSN-6110 o el DSN-6410 cambiando el botón de alimentación. Retire el chasis vacío aflojando los tornillos y las palancas de expulsión.



Paso 5

Inserte el segundo controlador en el almacenamiento SAN IP y fíjelo en su lugar, a continuación, encienda el sistema.



El almacenamiento SAN IP debe aparecer ahora en el modo de controlador dual como DSN-6120 o DSN-6420.

Vaya a "Mantenimiento\Información del sistema" para comprobar que el almacenamiento SAN IP está funcionando ahora en el modo de controlador dual.

Item	Information
CPU type	XSC3-IOP6134x Family rev 9 (6)
System memory	ECC Unbuffered DDR-II 2048MB
Firmware version	DSN-6000 2.0.1 (build 201102111500)
Serial number	14D64D688E40 (Controller 1 : 500137800390AD98 , Controller 2 : 500137800390A5D8)
Backplane ID	DSN6000
JBOD serial no.	No JBOD connected
JBOD status	No JBOD connected
Status	Normal
Replication	Not activated

Asistencia Técnica

Asistencia Técnica Telefónica de D-Link: +34 902 30 45 45
0,067 €/min

De Lunes a Viernes de 9:00 a 19:00
<http://www.dlink.es>

Guida di installazione rapida DSN-610/640

Sistema di archiviazione iSCSI IP SAN Storage

Contenuto della confezione

Se uno o più articoli risultano mancanti, rivolgersi al rivenditore.



(1) Controller RAID,
DSN-610 o DSN-640



(1) Trasmettitore e (1) cavo
GBIC solo per DSN-640

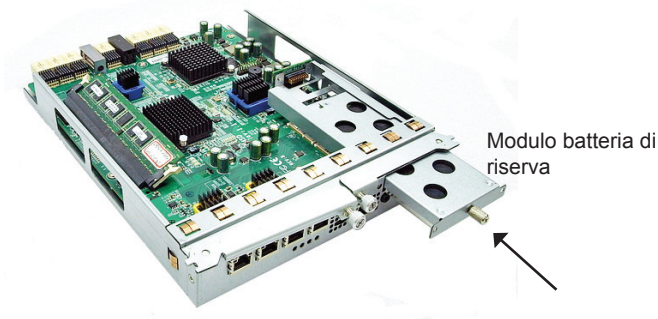
Installazione del modulo batteria di riserva

Attenersi alla procedura seguente per installare il modulo batteria di riserva.

1. Assicurarsi che il dispositivo della serie DSN-6000 sia spento.
2. Rimuovere il coperchio del modulo batteria di riserva.



3. Inserire il modulo batteria di riserva.



4. Serrare le viti.
5. Accendere il dispositivo della serie DSN-6000.

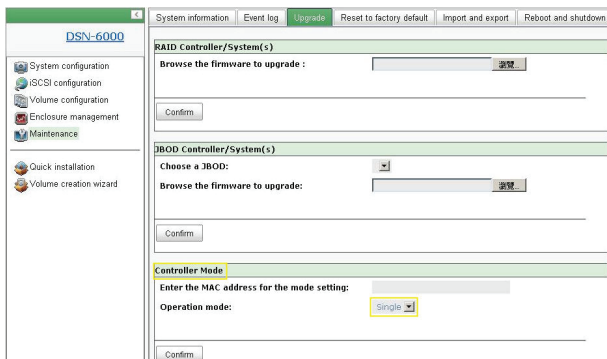
Installazione del dispositivo DSN-610/DSN-640 nel sottosistema DSN-6x10

La procedura seguente è valida per l'aggiornamento dal modello DSN-6110 al modello DSN-6120 e dal modello DSN-6410 al modello DSN-6420. Prima di procedere, assicurarsi che il dispositivo DSN-6110 o DSN-6410 sia stato correttamente installato come descritto nel manuale.

Prima di inserire il secondo controller nel sistema di archiviazione IP SAN, è necessario che quest'ultimo sia in esecuzione e che la pagina Maintenance (Manutenzione) System (Sistema) dell'interfaccia utente grafica sia simile a quella riportata nella figura seguente. Si noti che lo stato è Single (Singolo) perché è installato un solo controller.

Item	Information
CPU type	XSC3-IOP8134x Family rev 9 (v51)
System memory	ECC Unbuffered DDR-II 2048MB
Firmware version	DSN-6000 2.0.1 (build 201102111500)
Serial number	14D64D868E40 (Controller 1 : 500137800390AD98)
Backplane ID	DSN6000
JBOD serial no.	No JBOD connected
JBOD status	No JBOD connected
Status	Single
Replication	Not activated.

È inoltre possibile verificare la modalità del controller in “Maintenance (Manutenzione)\ Upgrade (Aggiornamento)”. Controllare la sezione “Controller Mode (Modalità controller)”.



Attendersi alla procedura seguente per eseguire l'aggiornamento alla modalità a doppio controller.

Passo 1

Passare a “Maintenance (Manutenzione)\System (Sistema)”. Copiare il numero di serie del sistema di archiviazione IP SAN.

DSN-6000		System information	Event log	Upgrade	Reset to factory default
Item	Information				
CPU type	XSC3-IOP8134x Family rev 9 (v5l)				
System memory	ECC Unbuffered DDR-II 2048MB				
Firmware version	DSN-6000 2.0.1 (build 201102111500)				
Serial number	14D64D968E40 Controller 1 : 500137800390AD98)				
Back-plane ID	DSN6000				
JBOD serial no.	No JBOD connected				
JBOD status	No JBOD connected				
Status	Single				
Replication	Not activated.				

Passo 2

Passare a “Maintenance (Manutenzione)\Upgrade (Aggiornamento)” e incollare il numero di serie nella sezione “Controller Mode (Modalità controller)”. Selezionare “Dual (Doppio)” come modalità di funzionamento.

The screenshot shows the 'Upgrade' tab in a management interface. It contains three sections:

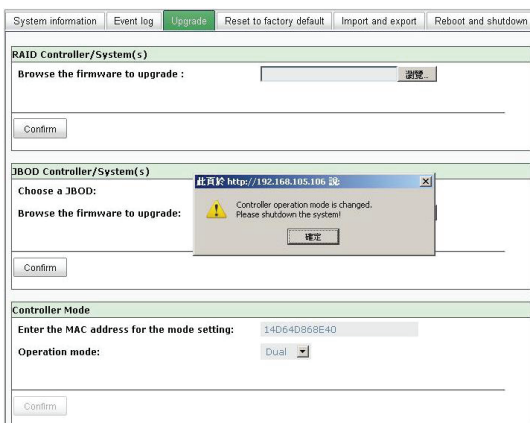
- RAID Controller/System(s)**: A text input field for 'Browse the firmware to upgrade' with a '浏览...' button and a 'Confirm' button below.
- JBOD Controller/System(s)**: A dropdown menu for 'Choose a JBOD:', a text input field for 'Browse the firmware to upgrade' with a '浏览...' button, and a 'Confirm' button below.
- Controller Mode**: A text input field for 'Enter the MAC address for the mode setting' containing '14D64DB68E40', a dropdown menu for 'Operation mode' with 'Dual' selected, and a 'Confirm' button below.

Passo 3

Fare clic su “Confirm (Conferma)”. Verrà richiesto l'arresto del sistema. Arrestare il sistema di archiviazione IP SAN.

This screenshot is identical to the previous one, but with a confirmation dialog box overlaid on the JBOD section. The dialog box has a title bar '此頁於 http://192.168.105.106 說' and a question mark icon. The text inside reads: 'Controller operation mode will be changed. Sure?'. There are two buttons: '確定' (Confirm) and '取消' (Cancel).

Fare clic su OK.



Passare a "Maintenance (Manutenzione)\Reboot and shutdown (Riavvia e arresta)". Fare clic su "Shutdown (Arresta)" per arrestare il sistema.



Fare clic su OK.



Passo 4

Spegnere il dispositivo DSN-6110 o DSN-6410 mediante il pulsante di alimentazione. Rimuovere il vano vuoto allentando le viti e le leve di espulsione.



Passo 5

Inserire il secondo controller nel sistema di archiviazione IP SAN e fissarlo con le viti, quindi accendere il sistema.



Per il sistema di archiviazione IP SAN è stata attivata la modalità a doppio controller come DSN-6120 o DSN-6420.

Passare a "Maintenance (Manutenzione)\System information (Informazioni sul sistema)" per verificare che la modalità a doppio controller è effettivamente attiva per il sistema di archiviazione IP SAN.

Item	Information
CPU type	XSC3-10P8134s Family rev 9 (v5)
System memory	ECC Unbuffered DDR-3 2048MB
Firmware version	DSN-6000 2.0.1 (build 201102111500)
Serial number	14D64D688E40 (Controller 1 : 5001378003904D98 , Controller 2 : 500137800390A5C6)
Backplane ID	DSN6000
JBOD serial no.	No JBOD connected
JBOD status	No JBOD connected
Status	Normal
Replication	Not activated

Supporto tecnico

Supporto Tecnico dal lunedì al venerdì dalle ore 9.00 alle ore 19.00 con orario continuato

Telefono: 199400057

URL : <http://www.dlink.it/support>

D-Link[®]



Ver. 1.00(EU)
2011/05/24

AB.DOC0D.QIG01