

Quick Setup Guide

To register this product please visit www.samsung.com/register.



BN68-04282G-LPR



List of Parts

The provided accessories may vary depending on the model.

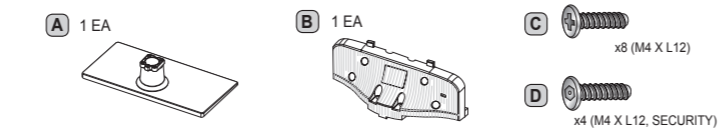
- | | | | |
|--|--|--|--|
| | | | |
| | | | |

Installing the LED TV Stand

◆ HG32EA590 / HG40EA590 / HG46EA590

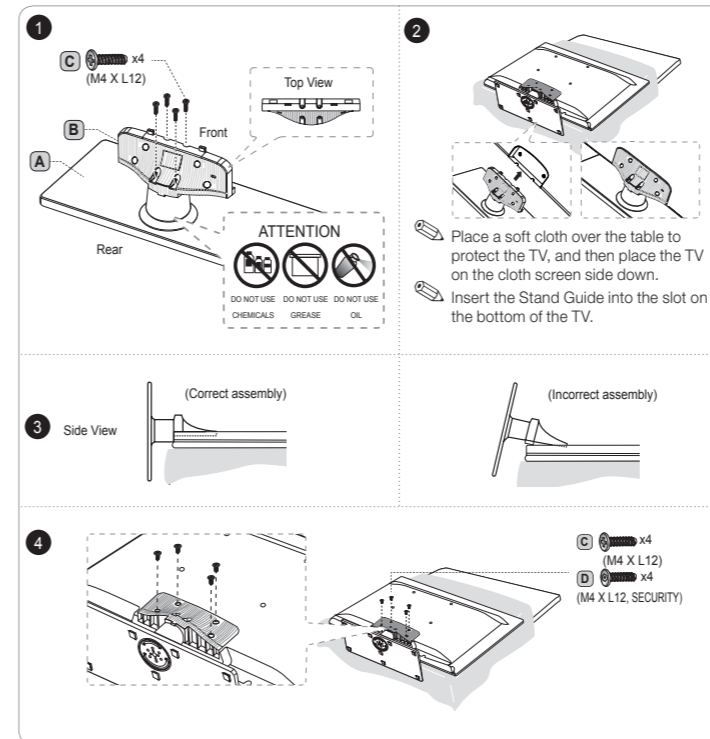
Components

When installing the stand, use the provided components and parts.

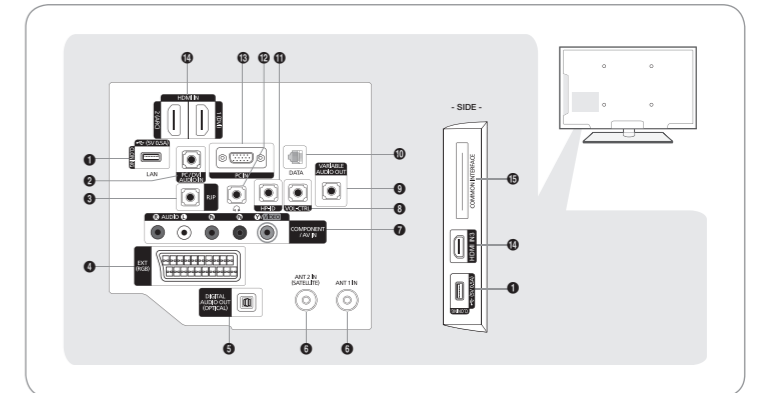


- Stand (depending on the model)
- Guide Stand
- Screws

> The stand shape of product may vary depending on the model.



Viewing the Connection Panel

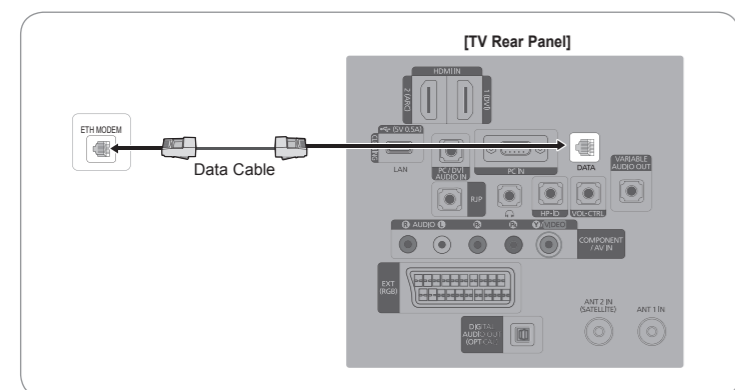


> The product color and shape may vary depending on the model.

- 1 USB (5V 0.5A), (HDD 5V 1A) / CLONING
- 2 PC / DVI AUDIO IN
- 3 RJP
- 4 EXT (RGB)
- 5 DIGITAL AUDIO OUT (OPTICAL)
- 6 ANT 1 IN, ANT 2 IN(SATELLITE)
- 7 COMPONENT / AV IN
- 8 VOL-CTRL
- 9 VARIABLE AUDIO OUT
- 10 DATA
- 11 HP-ID
- 12 HEADPHONE JACK
- 13 PC IN
- 14 HDMI IN 1 (DVI), 2 (ARC), 3
- 15 COMMON INTERFACE

Notice When in the Hotel mode (Interactive or Standalone), the Channel menu items in the Menu OSD, except for Channel List, are deactivated. If you need to change the channel line up, use the Channel Setup item in the Hotel option menu. Hotel Plug & Play is not supported in B-LAN models (D478/578).

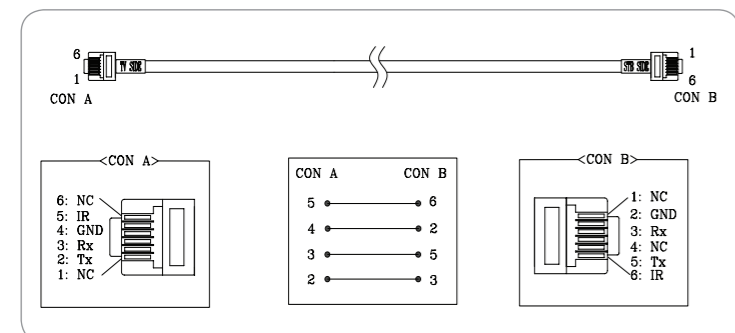
Connecting the TV with an SBB or STB



1. Connect the [DATA] jack of the TV to the [ETH MODEM] jack of the STB (SBB) with the Data cable.
 - > Use data communication.

List of Vendors and Compatible Data Cables Supplied with the TV

◆ Refer to the code label on the data cables.

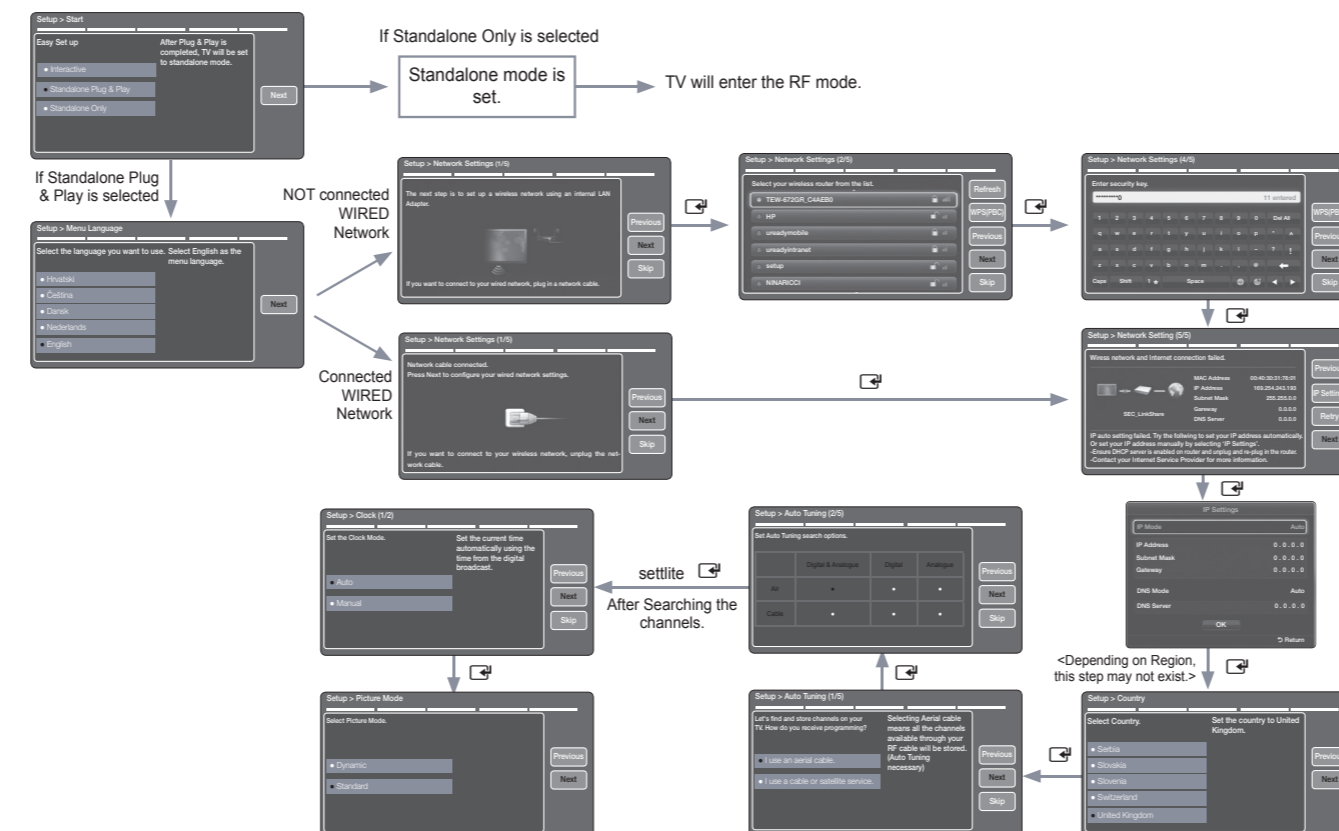


Hotel Plug & Play

Hotel Plug & Play is a function that automatically performs the Hotel mode selection, Country Setup, Clock Setup and Picture mode Setup once.

- Hotel Plug & Play is available only one time when power is first turned ON.
- After setting up first TV and Clone TV to USB
- Next TV only needs to exit Hotel Plug & Play, connect USB, then Clone USB to TV.

UI Scenario



◆ Hotel Plug & Play OSD

- Initial Highlight: Interactive
- If you select the Standalone Only button, the Standalone hotel mode is set by default and the "Standalone mode is set" OSD appears for 3 seconds.
- TV enters into RF mode automatically after displaying "Standalone mode is set" OSD for 3 seconds.
- If you select the Interactive mode, the Interactive Setup Menu is displayed. Press the power off key to exit from the Interactive menu.
- If you select the Standalone Plug & Play mode, the "Select Menu Language" OSD appears.

◆ Select Menu Language OSD

- If you select Standalone from the "Select Hotel TV Mode" OSD, the "Select Menu Language" OSD appears.
- Initial Highlight : English
- Display time: OSD timeout and operation are the same as Samsung's consumer TV models.
- If you press the Enter key, the "Select Country" OSD appears.

◆ Clock Mode OSD

- Initial Highlight: Auto.
- Display time: 30 seconds.
- The Clock Set item OSD appears if you select Manual.
- If you press the Enter key after setting the clock, or while in Auto clock set, the Picture Mode OSD appears.

◆ Set daylight saving time OSD

- Initial Highlight: Off
- If you press the Enter key, the Select the DST area OSD appears.

◆ Picture Mode OSD

- Initial Highlight: Dynamic.
- The TV displays the Picture Mode OSD where you can choose the Dynamic or a Standard Picture mode.
- After you select the picture mode, the TV displays the Standalone Setup Menu OSD. Press power off to exit.

◆ Auto Search Mode OSD

- If you select the Skip option, the TV displays the Clock Mode OSD.
- If you press the Enter key, the TV auto searches for channels.
- The OSD Display time, which starts at the time that Auto Store is completed goes to the time Auto Sort starts, is 30 seconds.

Setting the Hotel Option Data

Hotel TV Function			Description
Category	initial value		
Hospitality Mode	-	Standalone	Select the Hotel TV mode. (Standalone / Interactive)
SI Vendor	-	OFF	Select the SI Vendor
Power On	Power On Channel EN	User Defined	TV will turn on to particular Channel.
	Power On Channel	1	TV will turn on to this particular Channel.
	Channel Type	ATV	Provides channel Type description for Power On channel selected. i.e. Selected channel analog or Digital & antennae selection(Air or Cable).
	Power On Volume EN	User Defined	TV will turn on with this Volume Level.
	Power On Volume	10	TV will turn on with this Volume Level.
	Min Volume	0	Minimum Volume Level setting user can set
	Max Volume	100	Maximum Volume Level setting user can set
Channel	Power on source	TV	Select the Input source when TV is turned on initially.
	Power On Option	Last Option	Power On(AC Power On) Option - STN-BY : Stand-By Mode - Power On : Power On - LAST OPT : Last Power State
	Channel Setup	-	User can set channel option. Such as Auto Tunning, Manual Tunning, Antenna setting.
Channel	Channel Editor	-	Provided option for editing Channel Name and Number and video. Mute settings for channels in channel List.
	Mixed Channel Map	OFF	Mix Analogue and Digital Channels

Hotel TV Function			Description
Category	initial value		
Channel	Dynamic SI	OFF	On : No Check of the DTV Program channel number.(DTV channel editor accessible, but additional channel Program number update not supported) Off : Check the DTV Program channel number. (DTV channel editor inaccessible)
	Channel Rescan Message	ON	This is a display option for the OSD text that appears when a user configures the country specifications in hotel models. This option determines whether to activate the items that are only executed after a manual user confirmation when the notification message is displayed while the country specifications are being configured. On - When TV has an event for setting change because of country spec, it will be shown on the screen. Off - Even TV has an event for setting change, because of country spec, it will not be shown on the screen.
	Pan Euro MHEG	OFF	If Pan EURO MHEG is set to On, MHEG is On regardless of the product specifications or region. (Even if the region does not support MHEG, it is supported in case the hotel supports MHEG.)
My Channel	My channel En	OFF	Set the My channel function ON/OFF.
	Genre Editor		User can set the genre for searched channel.
Menu OSD	Picture Menu Lock	OFF	Provided option for editing Channel Name and Number and video. Mute settings for channels in channel List.
	Menu display	ON	- On : Main Menu display - Off : Main Menu No display
Operation	Panel Button Lock	Unlock	Front panel(Local key) operation on/off - Unlock: Unlock All panel key - Lock: Lock All panel key - OnlyPower : Lock All panel key except Power panel key
	Subtitle Auto On	OFF	Set the automatically subtitle on function when user set the nation to France.
Clock	Local time	Manual	Selection of the way to update clock data - Manual: Use clock data from DVB channel or manual clock setting When the TV is in the stand-alone mode. - TTX: manual clock setting (with updating from TTX data).

Hotel TV Function			Description
Category	initial value		
Music Mode	Music Mode AV	OFF	To get music output from mp3/audio player in AV Input Source. Audio enabled, video disabled in this mode
	Music Mode PC	OFF	To get music output from mp3/audio player in PC Input Source. Audio enabled, video disabled in this mode.
	Music Mode Comp	OFF	To get music output from mp3/audio player in Component Input Source. Audio enabled, video disabled in this mode
	Music Mode Backlight	OFF	Backlight On/Off option in Music mode to save energy
External Device	7610 Priority AV	1	If the jack priority is set, the corresponding source is automatically set when a jack is inserted according to the jack priority
	7610 Priority PC	2	If the jack priority is set, the corresponding source is automatically set when a jack is inserted according to the jack priority.
	7610 Priority HDMI	3	If the jack priority is set, the corresponding source is automatically set when a jack is inserted according to the jack priority.
	7610 AV Option	AV1	Select RJP AV Source (AV1).
	RJP HDMI Option	HDMI1/DVI	Select RJP HDMI Source (HDMI1/HDMI2/HDMI3).
External Source	Sound Bar Out	OFF	-
	USB Media Mode	Default	Control Pop-Up menu at USB insert to TV.
	External Source Banner	ON	Users can set External Source Banner to On or Off. On : When TV power On or Mode changed, TV will display the external source banner. Off : When TV power On or Mode changed, TV will not display the external source banner.
	Auto Source	OFF	While TV is in power on state, if PC source is connected to TV, TV will automatically switch to PC mode.
	Anynet+ Return Source	Power On Src	Set the return source after closing Anynet+.

Hotel TV Function			Description
Category	initial value		
Bathroom Speaker	Sub AMP mode	2	Determines the Sub AMP operation mode. - 0: Turns the Sub AMP function off (PWM off). - 1: Determines the Sub volume according to the main volume control. That is, the sub volume is determined according to the Power On Volume, the Min Volume, and the Max - 2: Determines the volume according to the bathroom control panel setting.
	Sub AMP volume	6	Sub AMP Volume level at power on initial condition.
Eco Solution	Energy Saving	Off	This feature adjusts the brightness of the TV in order to reduce power consumption. - Off: Turns off the energy saving function. - Low: Sets the TV to low energy saving mode. - Medium: Sets the TV to medium energy saving mode. - High: Sets the TV to high energy saving mode. - Auto: Sets the TV to automatically energy saving mode.
	Welcome message	OFF	Display Welcome Message.
Logo/Message	Edit Welcome Message		Edit Welcome Message.
	Hospitality Logo	OFF	User can set the logo display Off or the type of logo file (BMP/AVI).
	Hospitality Logo DL	-	Download the logo file from USB to TV.
	Logo Display Time	5 Seconds	Set the logo display time (3/5/7 Seconds).
Cloning	Clone TV to USB	-	USB Clone: TV → USB
	Clone USB to TV	-	USB Clone: USB → TV
	Setting Auto Initialize	OFF	When Setting Auto Initialize is set to On, and the power is turned off and on or the Master Power is turned off and on, the data is restored to the cloned values. If there is no cloned value, even when the Setting Auto Initialize is set to On, it will be ignored and the operation will be the same as that when Setting Auto Initialize is set to Off

Hotel TV Function			Description
Category	initial value		
SIRCH	SIRCH Update Time	1hour	Standby SIRCH will be operated, according to time setting
	SIRCH Update Immediate	OFF	Make TV operate SIRCH after 1 minute in Stand-by mode.
	Manual SIRCH	-	Make TV operate SIRCH by manually
	SIRCH Channel	87	Set the default channel for SIRCH - None : After Auto Scan, Operate SIRCH - Channel value : Operate SIRCH at the channel selected
	SIRCH Version	0	Display SIRCH version of TV
	SIRCH Group ID	All	Provided SIRCH ID for operating SIRCH on a specific set.
	REACH	OFF	Set whether to use REACH function.
Network	Network Setup	-	Set an IP address to establish an Internet connection.
	Hotel ID Setting	-	Set a Hotel ID.
	Smart Hub	-	Enter the Smart Hub.
SERVICE	Self Diagnosis		Enter Self Diagnosis Menu. Picture Test: Use to check for picture problems. If the problem appears in the test picture, select Yes and follow the directions on the screen. Sound Test: Use the built-in melody sound to check for sound problems. If the problem occurs during the test, select Yes and follow the directions on the screen.
	SW Upgrade		SW USB Update function
	Service Pattern		Same function with SVC Service Pattern
	TV Reset		Factory reset

Sound Bar

- ◆ **Samsung Sound-Bars and Hospitality TVs in 2012**
 - Samsung Sound-Bars and hospitality TVs support the ARC feature in HDMI 1.4. If you connect a compatible Samsung Sound-Bar to a compatible Samsung hospitality TV using a single HDMI cable, guests can listen to the TV's sound through the Sound-Bar.
 - Models supporting the ARC function are listed below:
 - Sound-Bars: HW-E350/E450/E550
 - ◆ **Setting the Sound-Bars to Hotel Mode.**
 1. Set the following Hotel menu options:
 - Hotel option > External Device > Sound Bar Out = On.
 - Hotel option > Power On > Power On Volume EN = User Defined.
 - Hotel option > Power On > Power On Volume > Set greater than 0.
 - Hotel option > Power On > Max Volume > Set greater than 0.
 2. Connect an HDMI cable from the HDMI OUT jack on the back of Sound-Bar to the HDMI2 port (supporting ARC) on the hospitality TV.
 3. After the Sound-Bar is connected to the hospitality TV, when the TV turns on, the Sound-Bar automatically detects the TV, and then automatically switches to Hotel Mode.
- Sound Bar Hotel mode functional characteristics:**
- Power On/Off is synchronized with the TV
 - HDMI_CEC defaults to On
 - Functions through the "HDMI OUT" port only
 - Disables the "Input mode" key on the VFD to prevent unexpected audio-source changes.
 - Acquires adjustable Power On and Max Volume settings from the TV's Hotel option menu. The Sound-Bar's Power On Volume and Max Volume values, however, are 1/2 of the Power On Volume and Max Volume settings in the TV's Hotel option menu. Example: If the TV's Power On Volume=20 and Max Volume=90, then the Sound Bar's Power On Volume=10 and Max Volume=45.

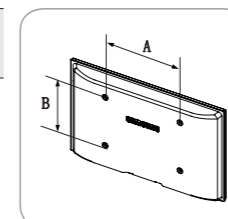
Licence



Wall Mount Kit Specifications (VESA)

- Install your wall mount on a solid wall perpendicular to the floor. When attaching to other building materials, please contact your nearest dealer. If installed on a ceiling or slanted wall, TV may fall and result in severe personal injury.
- Standard dimensions for wall mount kits are shown in the table below.
 - Samsung wall mount kits contain a detailed installation manual. All parts necessary for assembly are provided.
 - Do not use screws that do not comply with the VESA standard screw specifications.
 - Do not use screws that are longer than the standard dimension or do not comply with the VESA standard screw specifications. Screws that are too long may cause damage to the inside of the TV set.
 - For wall mounts that do not comply with the VESA standard screw specifications, the length of the screws may differ depending on the wall mount specifications.
 - Do not fasten the screws too firmly. This may damage the product or cause the product to fall, leading to personal injury. Samsung is not liable for these kinds of accidents.
 - Samsung is not liable for product damage or personal injury when a non-VESA or non-specified wall mount is used or the consumer fails to follow the product installation instructions.
 - Do not mount the TV at more than a 15 degree tilt.
 - Always have two people mount the TV on a wall.

Product Family	TV size in inches	VESA screw hole specs (A * B) in millimeters	Standard Screw (Length * Pitch in mm)	Quantity
LED-TV	19 ~ 22	75 X 75	M4 (10~15 * 0.7)	4
	26	100 X 100	M6 (10~15 * 1.0)	
	32 ~ 40	200 X 200	M8 (10~15 * 1.25)	
	46	400 X 400	M8 (10~15 * 1.25)	



Do not install your Wall Mount Kit while your TV is turned on. It may result in personal injury due to electric shock.

Specifications

Display Resolution	1920 x 1080	
Environmental Considerations		
Operating Temperature	50°F to 104°F(10°C to 40°C)	
Operating Humidity	10% to 80%, non-condensing	
Storage Temperature	-4°F to 113°F(-20°C to 45°C)	
Storage Humidity	5% to 95%, non-condensing	
Stand Swivel (Left / Right)	-20° ~ 20°	
Model Name	HG32EA590	HG40EA590
Screen Size	32 inches	40 inches
Power Consumption Normal operation	35W	47.4W
Standby		
Sound (Output)	10W x 2	
Dimensions (WxDxH)		
Body	738.3 X 93.2 X 444.9 mm	927.6 X 93.0 X 551.0 mm
With stand	738.3 X 191.7 X 500.6 mm	927.6 X 227.6 X 607.0 mm
Weight Without Stand	5.9 kg	9.0 kg
With Stand	7.9 kg	11.9 kg
Model Name	HG46EA590	
Screen Size	46 inches	
Power Consumption Normal operation	52.5W	
Standby		
Sound (Output)	10W x 2	
Dimensions (WxDxH)		
Body	1059.8 X 94.3 X 625.6 mm	
With stand	1059.8 X 227.6 X 681.2 mm	
Weight Without Stand	12.5 kg	
With Stand	15.4 kg	

- Design and specifications are subject to change without prior notice.
- For information about power supply and power consumption, refer to the label attached to the product.