

NETGEAR Smart Switch™ GS728TP, GS728TPP, GS752TP

Package Contents

- NETGEAR Smart Switch™ GS728TP, GS728TPP, or GS752TP
- Rubber footpads for tabletop installation
- AC power cord
- 19-inch rack-mount kit for rack installation
- Installation guide
- Smart Switch resource CD that includes the Smart Control Center Utility and hardware installation guide. (A link to the online software administration manual is on the resource CD.)

Configure the Switch

Install the Smart Control Center Utility and use it to configure the switch.

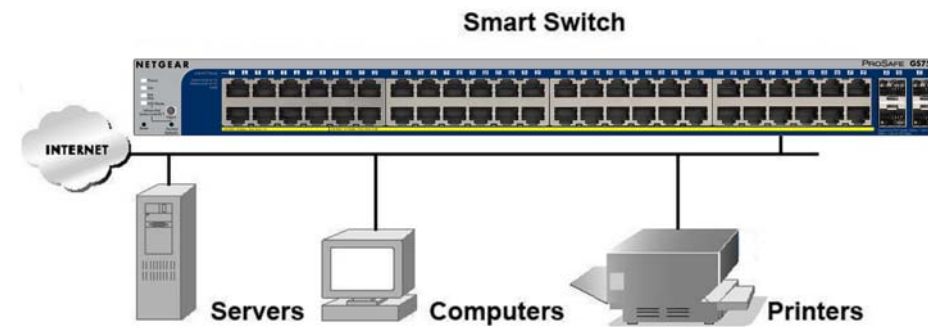
Install the Smart Control Center Utility on a Computer

1. Insert the resource CD into your CD drive.
2. Run the Setup program to install the Smart Control Center Utility. The Installation Wizard guides you through the installation.

Connect Your Smart Switch


These instructions assume you are using DHCP in your network. If you are using static IP addressing in your network, configure the switch IP address before connecting the switch to your network. If there is no DHCP server, the switch IP address will default to 192.168.0.239.

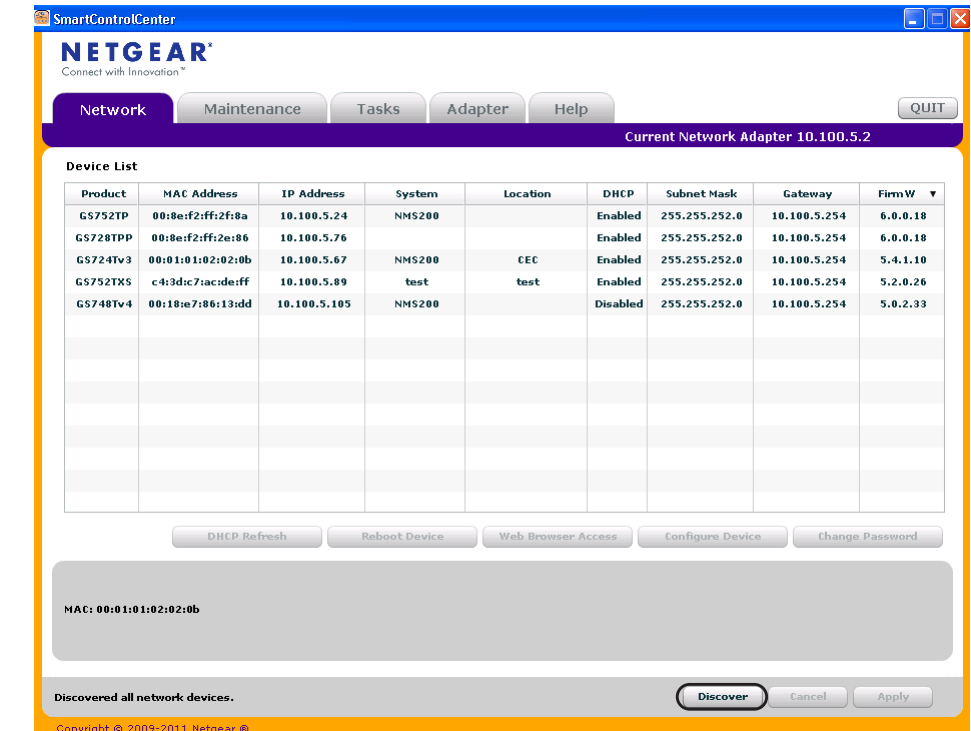
1. Set up the computer with a static IP address in the 192.168.0.x subnet, and connect the computer to the switch. Then, use the Smart Control Center Utility to configure the switch.
2. Connect each computer to an RJ-45 network port on the switch front panel. Use Category 5 (Cat 5) unshielded twisted-pair (UTP) cable terminated with an RJ-45 connector to make these connections.



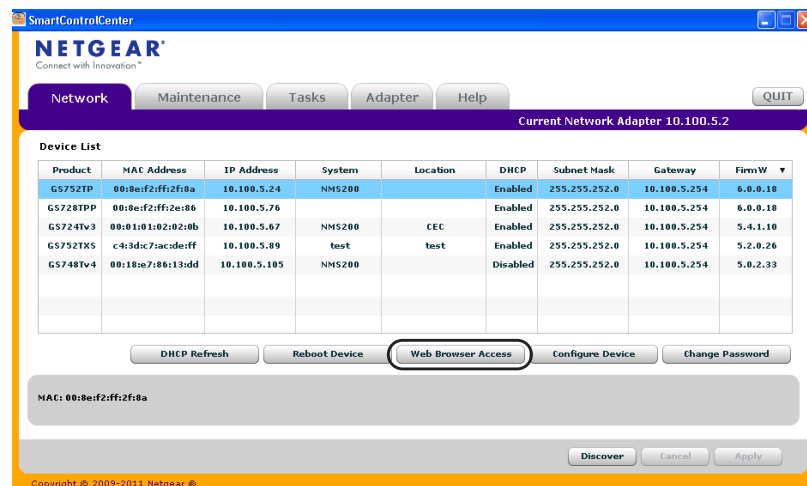
3. Connect the switch to your network.
4. Power on the switch.
5. Verify that the computer with the Smart Control Center Utility is on the same subnet as the switch.

Configure the Switch with the Smart Control Center Utility

1. Double-click the Smart Control Center Utility icon  on your desktop or in the Windows Start menu to run the utility and view this screen.

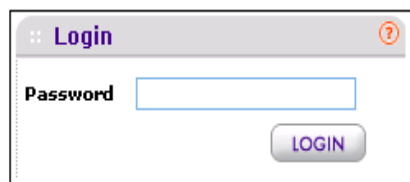


2. Click **Discover** to find your switch in the network.



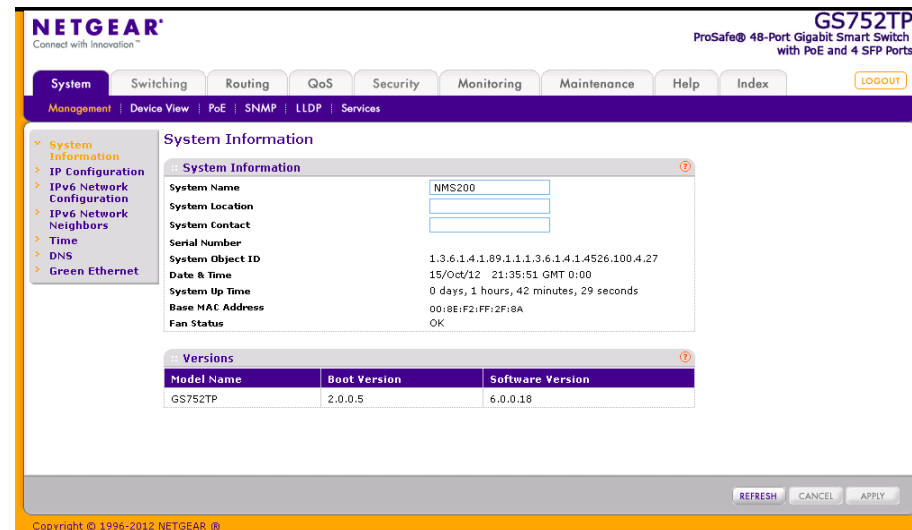
The Smart Control Center Utility finds the switch and displays its MAC address, IP address, and model number. If you cannot configure your switch, verify that the cable connections are secure and that the IP address configuration of the computer is in the same subnet as the switch, and click the **Discover** button.

- Click to select the line displaying the details of your switch. If there are multiple switches in your network, be sure to select the one you want to configure.
- Click **Web Browser Access** to view the switch Login screen.



- Enter the default password of **password** in lower case letters and click **Login**. The switch displays the switch main settings page. Configure the switch for your network. Consult the reference manual on the resource CD or the online help in the switch for assistance with configuration procedures.

After you log in to the switch, the main System Information screen displays.



Use the configuration menu options to configure your switch.

Troubleshooting Tips

Here are some tips for correcting simple problems you might have.

- Be sure to power on your computer and switch in the correct sequence: First, turn off the switch and computer. Next, turn on the switch and wait 2 minutes. Last, turn on the computer.
- Make sure the Ethernet cables are plugged in. For each powered-on computer connected to the switch, the corresponding switch LAN port status LED is lit.

- Make sure the network settings of the computer are correct.

In most cases, computers should be configured to obtain an IP address through DHCP.

If your network uses static IP addresses, be sure that the switch and computer are configured with valid IP addresses. For help with this, see the software administration manual.

Technical Support

After installing your device, locate the serial number on the label of your product and use it to register your product at <https://my.netgear.com>.

You must register your product before you can use NETGEAR telephone support. NETGEAR recommends registering your product through the NETGEAR website. For product updates and web support, visit <http://support.netgear.com>.

For additional information about setting up, configuring, and using your smart switch, see the software administration manual. You can get the manual online at <http://downloadcenter.netgear.com>.

NETGEAR recommends that you use only the official NETGEAR support resources.

WARNING!!

Do not stack equipment, or place equipment in tight spaces, in drawers, or on carpets. Make sure that your equipment has at least 2 inches (5 cm) of air space on all sides.

NETGEAR, the NETGEAR logo, and Connect with Innovation are trademarks and/or registered trademarks of NETGEAR, Inc. and/or its subsidiaries in the United States and/or other countries. Information is subject to change without notice. Other brand and product names are registered trademarks or trademarks of their respective holders. © NETGEAR, Inc. All rights reserved.

For the complete EU Declaration of Conformity, visit http://support.netgear.com/app/answers/detail/a_id/11621/.

Intended for indoor use only in all EU member states, EFTA states, and Switzerland.



201-15985-01

December 2012