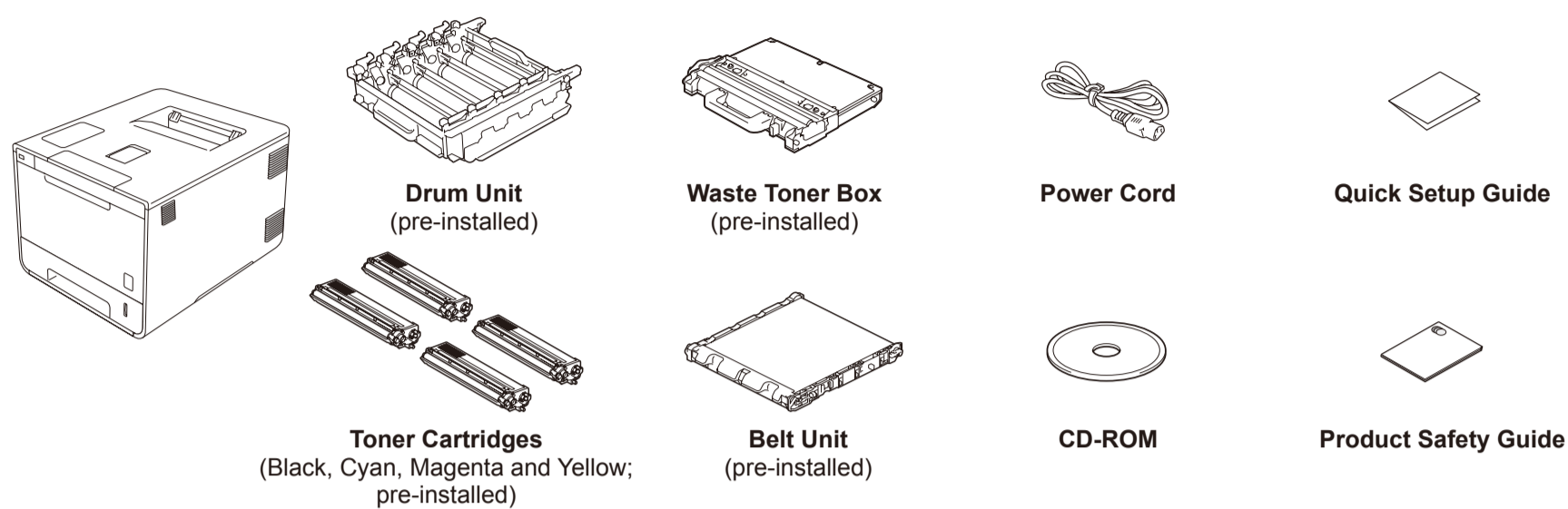


## Unpack the machine and check the components

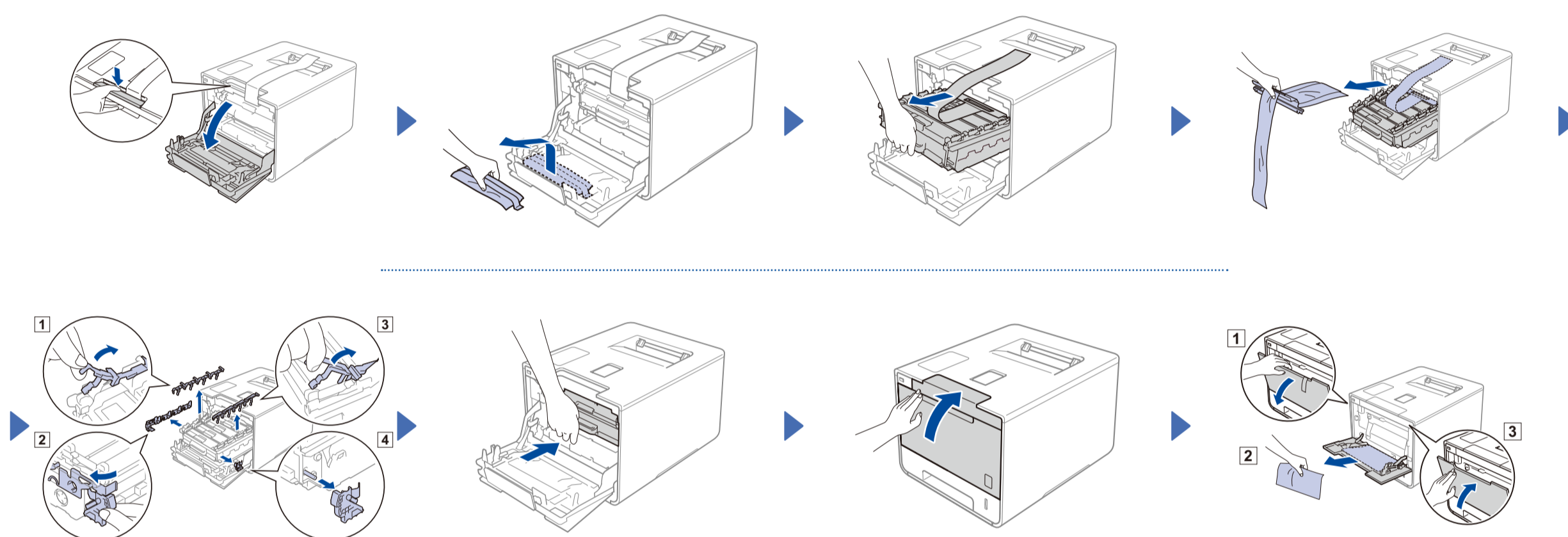


Read the Product Safety Guide first, and then read this Quick Setup Guide for the correct installation procedure.

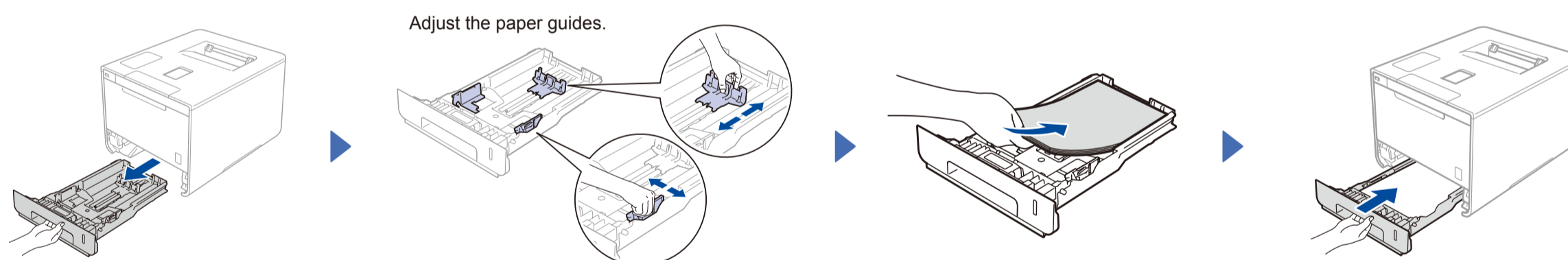
**NOTE:**

- The components included in the box and the AC power plug connection may differ depending on your country.
- The illustrations in this Quick Setup Guide are based on the HL-L8350CDW.
- You must purchase the correct interface cable for the interface you want to use:  
**USB cable**  
 We recommend using a USB 2.0 cable (Type A/B) that is no more than 6 feet (2 meters) long.  
**Network cable**  
 Use a straight-through Category 5 (or greater) twisted-pair cable for 10BASE-T or 100BASE-TX Fast Ethernet Network.

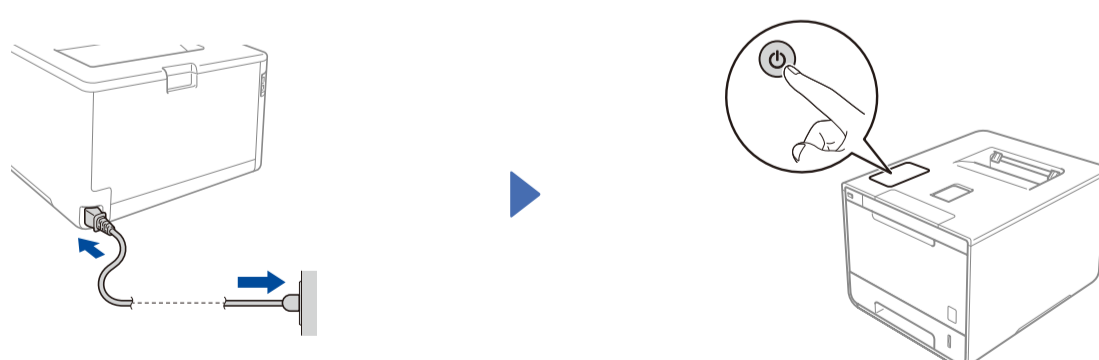
## 1 Remove the packing material from the machine



## 2 Load paper in the paper tray



## 3 Connect the power cord and turn on the machine



The machine's LCD displays **Ready**. ▶ Go to step **4**  
 The machine's LCD displays **Setup Wi-Fi?**. ▶ Go to step **5**

## 4 Select your language

1. Press **▲** or **▼** to display **General Setup**, and then press **OK**.
2. Press **OK** to select **Local Language**.
3. Press **▲** or **▼** to select your language, and then press **OK**.  
Go to step **6**.

## 5 Wireless setup for WLAN models only

If the machine's LCD displays **Setup Wi-Fi?** after you turn on, do one of the following:

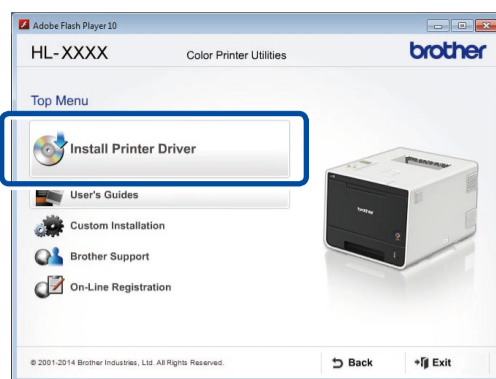
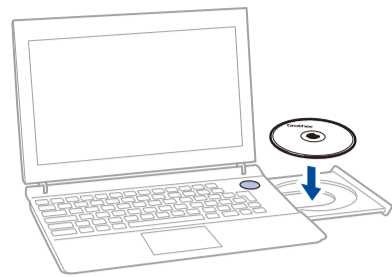
(To change the language)  
Press **▼** to select **No**, and then back to step **4**.

(To connect your computer)  
Press **▼** to select **No**, and then go to step **6**.

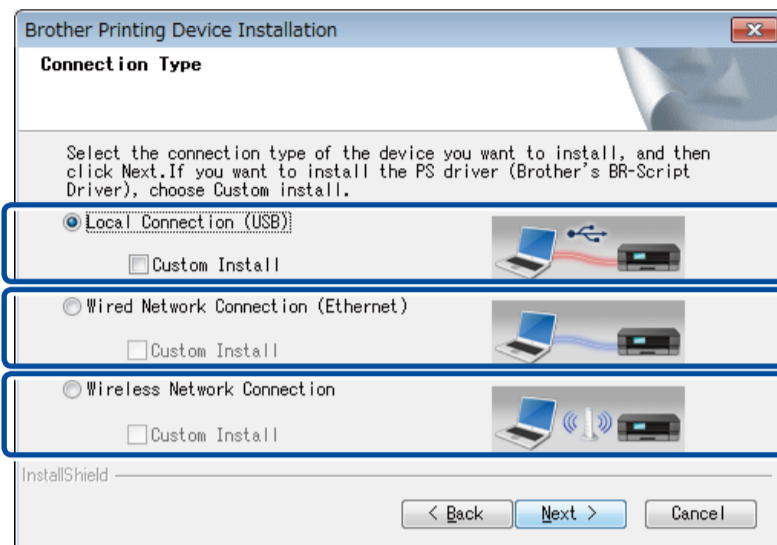
(To connect your mobile device)  
Press **▲** to select **Yes**, and then go to **Print using your mobile device** in step **6**.



## Configuration using the CD-ROM (Windows®)



Follow the on-screen instructions until the **Connection Type** screen appears.



For USB Connection

For Wired Network Connection  
Connect a network cable first.

For Wireless Network Connection

Follow the on-screen instructions to continue the installation.

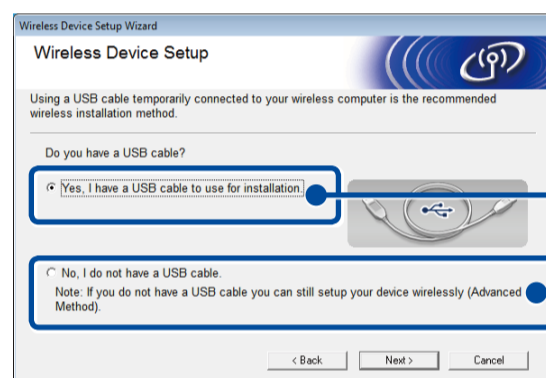
**Finish**

**NOTE:**

If connection is unsuccessful, repeat this step.



### Wireless Network Connection



**[Recommended]**  
Temporarily use a USB cable  
for easy setup.

**[Option]**  
Select if you do not have a USB cable.

Follow the on-screen instructions to continue the installation.

**Finish**

**NOTE:**

If connection is unsuccessful, repeat this step.



## Configuration without using the CD-ROM (Windows® without CD-ROM drive or Macintosh)

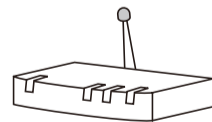
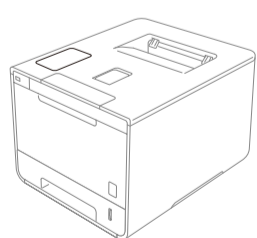
Download the full driver and software package from the Brother Solutions Center.  
(For Windows®) [solutions.brother.com/windows](http://solutions.brother.com/windows)  
(For Macintosh) [solutions.brother.com/mac](http://solutions.brother.com/mac)



## Print using your mobile device

Print from your mobile devices using our free application "Brother iPrint&Scan".

1. Connect the machine and wireless LAN access point/router from the machine's control panel.



Select Method  
Setup Wizard

Press **OK**

WLAN Enable?  
▲ On ▼ Off

Press ▲ to select On

Select the specified SSID,  
and then enter the Network key.

2. Download "Brother iPrint&Scan" to start using your machine with mobile devices.  
[solutions.brother.com/ips](http://solutions.brother.com/ips)

**Finish**