



PN-HS551/HS501/HS431

4K Ultra HD displays for Digital Signage

www.sharp.eu

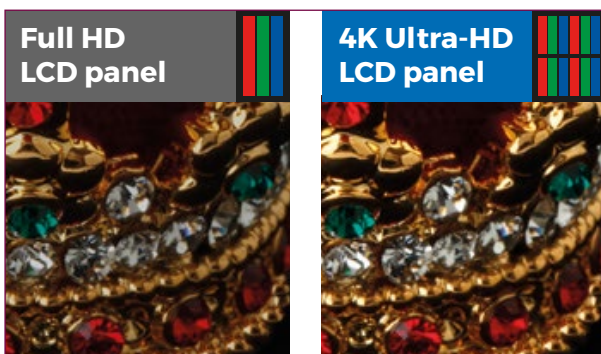
SHARP
Be Original.

Make a real impact – anytime, anywhere.

Bring all of your information bursting into life wherever and whenever you need to stand out from the crowd.

Sharp's PN-HS professional digital signage displays offer a unique combination of an exceptionally slim and stylish design, brilliantly clear and bright 4K pictures, 24/7 operation and flexible installation. It makes them great for signage and information sharing in a wide range of retail, corporate and transport environments, including high brightness areas like train stations and airports.

On-screen content, including movies and still images, is rendered in superbly detailed 4K Ultra HD (3840 x 2160) resolution, which is four times the resolution of 1080p Full HD. Their 700 cd/m² brightness and innovative LED backlighting also creates more vivid colours and a boosted contrast, which ensures that text is sharper and graphics are beautifully textured. So everything is displayed in the detail, depth, and definition that the content creator intended.

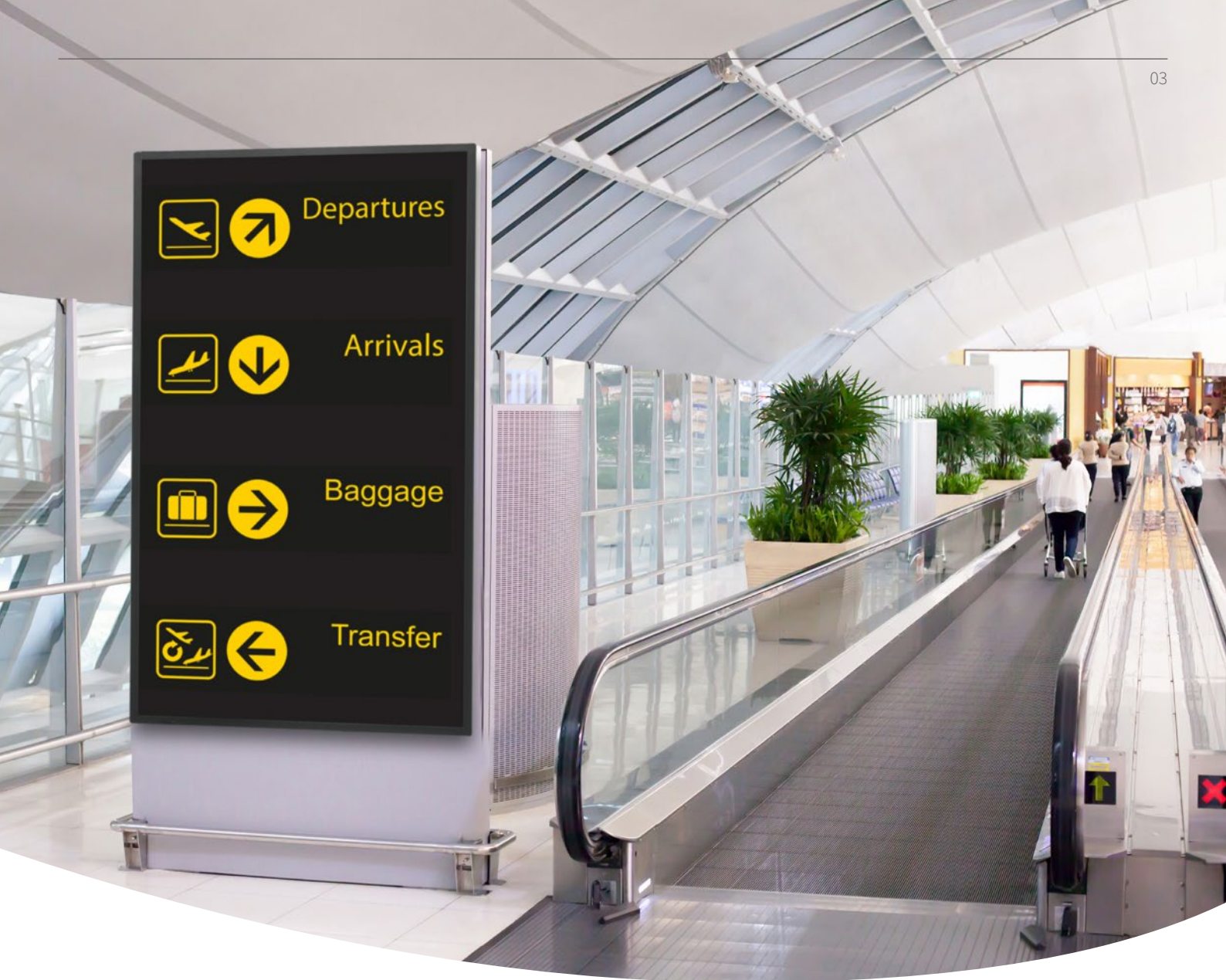


By delivering such an exceptional level of clarity, the screens are optimised for reading and displaying complex information in professional specialised applications, such as CAD/CAM, surveillance or medical imaging systems, as well as digital out of home (DooH) applications in airports and transport hubs. In addition, their white balance adjustment and colour temperature makes them ideal for high-quality broadcasting and video production.

More naturally colourful

The range of PN-HS professional displays has a wider colour gamut, giving a much more accurate representation of any colour displayed on-screen. Their 10Bit colour depth is approximately 20% larger than the sRGB (Red, Green, Blue spectrum) standard colour gamut range, ensuring that images look more natural and life-like.

It means that they are ideal for communicating precise and attention-grabbing information to a wide range of audiences. In particular, they excel in any indoor venues, including meeting rooms and executive boardrooms, as well as digital signage in reception areas, retail locations and public spaces, such as hotels and museums.



Designed to fit in anywhere

It's one thing to make your content look good, but if you want to make a really positive impact your display should also look good in its own right!

The slim dimensions and stylish cabinet design of our PN-HS professional displays gives them an impressively sleek and elegant look. Their lightweight design also makes them easy to install in a wide variety of locations.

So you can exquisitely enhance almost any space, from the most sophisticated boardroom to high traffic retail environments, and deliver eye-catching content that really grabs people's attention.

More sizes, more choice

With sizes ranging from 43" up to 55", you can select the most suitable display for your particular needs or operating space.

An added dimension to gain more attention.

People are attracted by stunning visuals, but combining audio creates a much more compelling and interactive experience.

Commercial displays and digital signage have traditionally used static images and silent video. But today's multimedia savvy audiences expect more – especially if you want to attract and retain their attention for longer.

Our PN-HS professional displays all incorporate built-in speakers, support for USB playback and a choice of useful connectivity options as standard. So you can easily combine video and audio to present content that makes a real impact.

In particular, their 10W + 10W speakers automatically enhance any multimedia content, without having to spend time, effort or money on connecting and configuring external speakers. And because they are fully integrated they also save space and add to the sleek, modern look of your displays.

Powerful standalone playback

The PN-HS range include a built-in USB media player that can be used to play slideshows of 4K Ultra HD photos, 4K Ultra HD videos and music stored on a connected USB memory device. So you don't need a separate PC, specialist software applications, extra hardware or unsightly cabling to play your media. Just "plug and go"!



Easy centralised control

An integrated LAN/RS-232C interface means that all of your PN-HS displays can be adapted to suit your own control systems. So they can be easily controlled and monitored from a single PC or laptop in a central location.

Each display is also fitted with four HDMI inputs, so you can readily switch between sources.



DEPARTURES

Time	Destination	Flight	Gate
15:00	Paris	AA6450	B28
15:05	Munich	BG2301	B17
15:15	New York	JQ2003	A23
15:20	Dusseldorf	TR5237	A41
15:30	Boston	AA6450	D9
15:45	Washington	BG2301	E12
16:05	Manchester	JQ2003	A19
16:15	Beijing	TR5237	B35
16:20	Istanbul	AA6450	B10



Non-stop performance, endless flexibility.

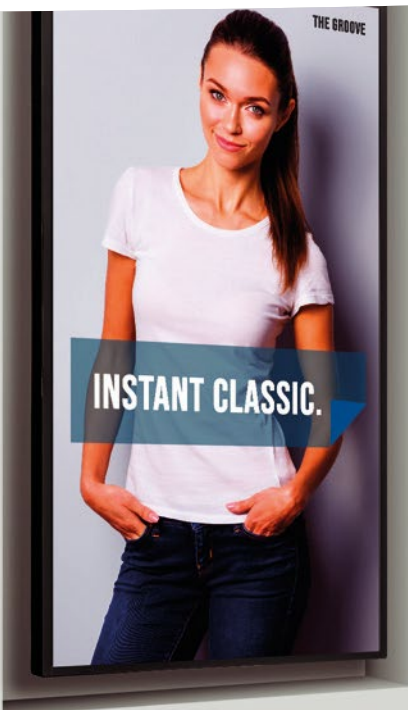
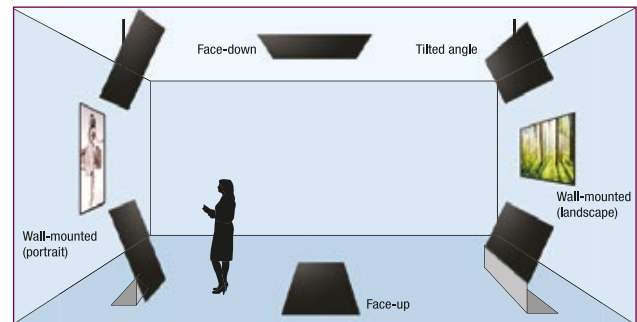
To deliver maximum value your technology needs to be capable of working just as long as you do, and in just the way you want it to.

Our PN-HS professional displays are ideal for transport hubs such as airports, train stations, and other high-demand applications and environments. Their ability to operate 24/7 means they will deliver your content with outstanding clarity and precision without any interruption. It makes them ideal for promoting products and services or presenting information in a wide range of settings that are open around the clock, including reception areas, transport hubs and shopping centres.

Working your way

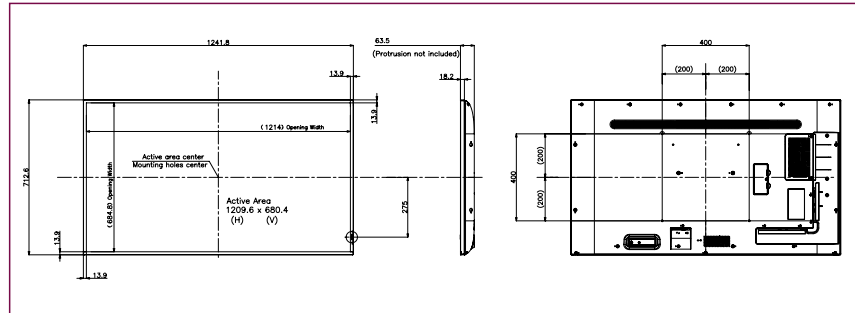
The PN-HS displays can be conventionally wall mounted in either landscape or portrait mode, so they suit their surroundings and the type of content you want to show. It means you can create high-impact visual posters or engage people with ultra-realistic, wide-screen films or images.

Alternatively, if you want to stand out from the crowd, they can also be installed face-down on a ceiling or face-up on a table or floor. It opens up new possibilities to make an instant impression and present information in exciting new ways, perhaps for high-profile retail advertising or innovative wayfinding signage and points of interest (POI) in public spaces.

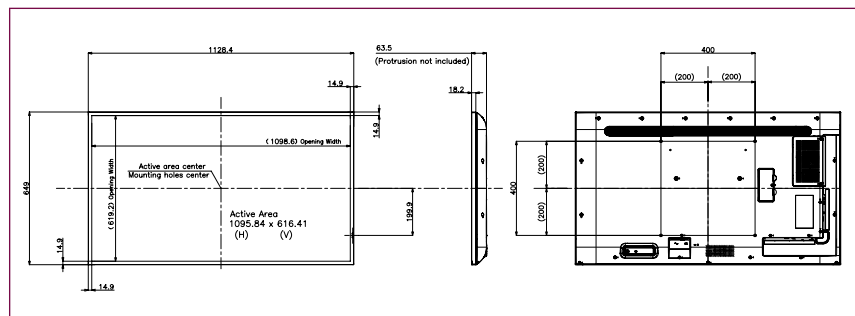


Dimensions

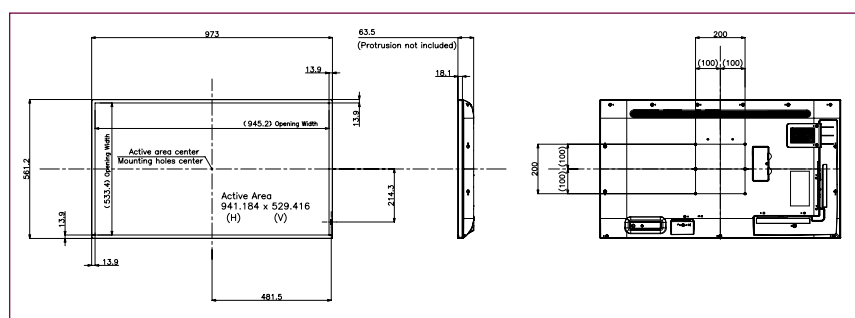
PN-HS551



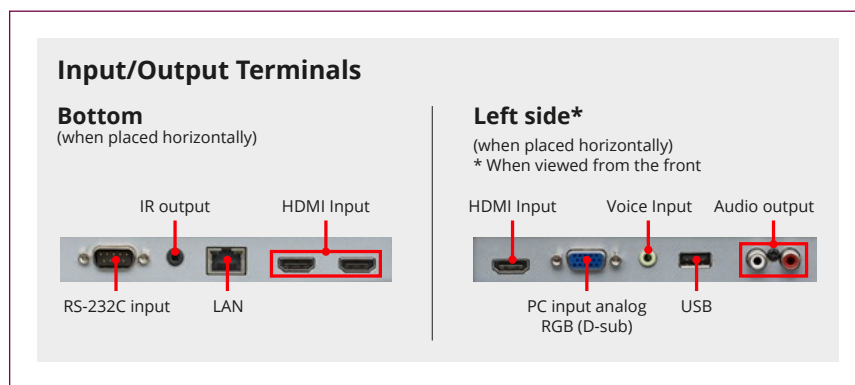
PN-HS501



PN-HS431



Compatibility



Specifications

Model name	PN-HS551	PN-HS501	PN-HS431	
Installation	Landscape / Portrait / Face-up / Face-down / Tilt-forward / Tilt-backward			
LCD Panel	Panel Size	55" class 138 cm TFT LCD	50" class 125 cm TFT LCD	43" class 107 cm TFT LCD
	Backlight	LED, full array		
	Max. Resolution	3,840 × 2,160 pixels		
	Max. Display Colours (approx.)	1,070 million colours		
	Pixel Pitch (HxV)	0.315 × 0.315 mm	0.2854 × 0.2854 mm	0.2451 × 0.2451 mm
	Max Brightness*1	700 cd/m ²		
	Contrast ratio	5,000 : 1	4,000 : 1	1,200 : 1
	Viewing Angle (H/V)	178°/178° (CR 10)		
	Operating Time	24/7		
	Active Screen Area (W×H)	1209 x 680 mm	1095 x 616 mm	941 x 529 mm
Response Time	8ms (grey to grey, avg.)			
Input Terminals*2	Computer	3x HDMI2.0 / HDCP 2.2 / CEC, 1x D-Sub 15pin		
	Plug & Play	VESA DDC2B		
	Audio	3.5mm mini stereo jack x 1		
	Serial (RS-232C)	D-sub 9 pin x 1		
Output Terminals*2	Audio	RCA pin (L/R) x 1		
USB Port	USB port (2.0-compliant) × 1			
LAN Terminal	10Base-T/100Base-TX			
Speakers Output	10W + 10W			
Power Requirement	AC 100 - 240 V, 50/60 Hz			
Mounting	4 points, 400 × 400 mm pitch, M6 screw	4 points, 400 × 400 mm pitch, M6 screw	4 points, 200 × 200 mm pitch, M6 screw	
Environmental Conditions	Operating Temperature*3	0°C to 40°C		
	Operating Humidity	20% to 80% (no condensation)		
Power Consumption (Input signal waiting state/standby mode*4)	150 W (1W / 0.5W)	110 W (1W / 0.5W)	100 W (1W / 0.5W)	
Product Dimensions (WxHxD in mm)	1241.8 × 712.6 × 63.5	1128.4 × 649 × 6.5	973 × 561.2 × 63.5	
Weight	18 kg	15 kg	11.5 kg	
Main Accessories	Remote Control Transmitter 1, Operation Manual, Installation Set-Up Manual, CD Rom, Power Cord, Battery 2 PC (type AA for remote control transmitter), Cable Clamp, Portrait Mount Sticker Kit			



*1 Brightness depends on input mode and other picture settings. Brightness level will decrease over time. Due to the nature of the equipment, it is not possible to precisely maintain a constant level of brightness. *2 Use a commercially available connection cable for PC and other video connections. *3 When using the monitor lying flat on a surface (or when the monitor is tilted more than 20 degrees upward or downward from the perpendicular in relation to a level surface) the ambient temperature must be within the range of 0°C to 30°C. Temperature conditions may change when using the monitor together with optional equipment. In such cases, check the temperature conditions specified by the optional equipment. *4 No optional part is attached.

Design and specifications are subject to change without prior notice. All information was correct at time of print. The terms HDMI, HDMI High-Definition Multimedia Interface, and the HDMI Logo are trademarks or registered trademarks of HDMI Licensing Administrator, Inc. All other brand names and product names may be trademarks or registered trademarks of their respective owners. © Sharp Corporation November 2021. Ref: 21439 PN-HS 8pp Brochure. All trademarks acknowledged. E&OE.